

bs-11017R**[Primary Antibody]****NPTX2 Rabbit pAb****BioSS**
ANTIBODIES

www.bioss.com.cn

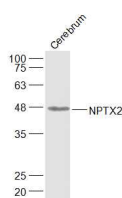
sales@bioss.com.cn

techsupport@bioss.com.cn

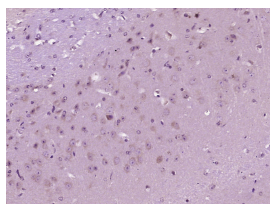
400-901-9800

— DATASHEET —

Host: Rabbit	Isotype: IgG	Applications: WB (1:500-2000)
Clonality: Polyclonal		IHC-P (1:100-500)
GeneID: 4885	SWISS: P47972	IHC-F (1:100-500)
Target: NPTX2		IF (1:100-500)
Immunogen: KLH conjugated synthetic peptide derived from human NPTX2: 165-265/431.		Reactivity: Mouse (predicted: Human, Rat, Sheep, Cow, Dog)
Purification: affinity purified by Protein A		
Concentration: 1mg/ml		Predicted MW.: 46 kDa
Storage: 0.01M TBS (pH7.4) with 1% BSA, 0.02% Proclin300 and 50% Glycerol. Shipped at 4°C. Store at -20°C for one year. Avoid repeated freeze/thaw cycles.		Subcellular Location: Secreted
Background: Long pentraxins are a family of highly conserved proteins that are expressed in the brain and central nervous system, and form multimeric complexes. Neuronal pentraxin 1 (NP1), NP2, and neuronal pentraxin receptor (NPR) are members of the long pentraxins that represent a neuronal uptake pathway that may function during synapse formation and remodeling. The NP1 gene is located on chromosome 17q25.3 and the protein product mediates the uptake of synaptic material, including the presynaptic snake venom toxin, taipoxin (3). NP2, whose function is unknown, is located on chromosome 7q22.1 and like NP1 contains several potential N-linked glycosylation sites. NPR is expressed on the cell membrane and can form heteropentamers with NP1 and NP2 that can be released from the cell membrane by proteolysis.		

— VALIDATION IMAGES —

Sample: Cerebrum (Mouse) Lysate at 40 ug
 Primary: Anti-NPTX2 (bs-11017R) at 1/1000
 dilution Secondary: IRDye800CW Goat Anti-
 Rabbit IgG at 1/20000 dilution Predicted band
 size: 46 kD Observed band size: 46 kD



Paraformaldehyde-fixed, paraffin embedded
 (Mouse brain); Antigen retrieval by boiling in
 sodium citrate buffer (pH6.0) for 15min; Block
 endogenous peroxidase by 3% hydrogen
 peroxide for 20 minutes; Blocking buffer (normal
 goat serum) at 37°C for 30min; Antibody
 incubation with (NPTX2) Polyclonal Antibody,
 Unconjugated (bs-11017R) at 1:400 overnight at
 4°C, followed by operating according to SP
 Kit(Rabbit) (sp-0023) instructions and DAB
 staining.