

**bs-1400R****[ Primary Antibody ]****Bioss**  
ANTIBODIES

www.bioss.com.cn

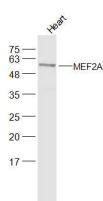
sales@bioss.com.cn

techsupport@bioss.com.cn

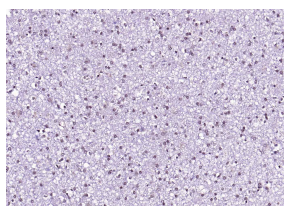
400-901-9800

**MEF2A Rabbit pAb****— DATASHEET —**

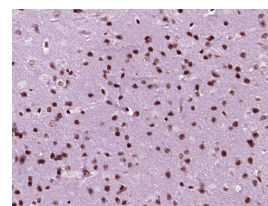
<b>Host:</b> Rabbit	<b>Isotype:</b> IgG	<b>Applications:</b> <b>WB</b> (1:500-2000) <b>IHC-P</b> (1:100-500) <b>IHC-F</b> (1:100-500) <b>IF</b> (1:100-500)  <b>Reactivity:</b> Human, Mouse (predicted: Rat, Zebrafish)  <b>Predicted MW.:</b> 54 kDa  <b>Subcellular Location:</b> Nucleus
<b>Clonality:</b> Polyclonal		
<b>GeneID:</b> 4205	<b>SWISS:</b> Q02078	
<b>Target:</b> MEF2A		
<b>Immunogen:</b> KLH conjugated synthetic peptide derived from human MEF2: 1-150/497.		
<b>Purification:</b> affinity purified by Protein A		
<b>Concentration:</b> 1mg/ml		
<b>Storage:</b> 0.01M TBS (pH7.4) with 1% BSA, 0.02% Proclin300 and 50% Glycerol. Shipped at 4°C. Store at -20°C for one year. Avoid repeated freeze/thaw cycles.		
<b>Background:</b> The process of differentiation from mesodermal precursor cells to myoblasts has led to the discovery of a variety of tissue-specific factors that regulate muscle gene expression. The myogenic basic helix-loop-helix proteins, including myoD (MIM 159970), myogenin (MIM 159980), MYF5 (MIM 159990), and MRF4 (MIM 159991) are one class of identified factors. A second family of DNA binding regulatory proteins is the myocyte-specific enhancer factor-2 (MEF2) family. Each of these proteins binds to the MEF2 target DNA sequence present in the regulatory regions of many, if not all, muscle-specific genes. The MEF2 genes are members of the MADS gene family (named for the yeast mating type-specific transcription factor MCM1, the plant homeotic genes 'agamous' and 'deficiens' and the human serum response factor SRF (MIM 600589)), a family that also includes several homeotic genes and other transcription factors, all of which share a conserved DNA-binding domain. MEF2A belongs to a family of DNA binding regulatory proteins. The MEF2 family of transcription factors is highly expressed in the brain when neurons undergo dendritic maturation and synapse formation. MEF2A is especially abundant in granule neurons of the cerebellar cortex throughout the period of synaptogenesis. MEF2A also has key roles in cardiac and skeletal muscle development.		

**— VALIDATION IMAGES —**

Sample: Heart (Mouse) Lysate at 40 ug Primary:  
Anti-MEF2A (bs-1400R) at 1/300 dilution  
Secondary: IRDye800CW Goat Anti-Rabbit IgG at  
1/20000 dilution Predicted band size: 54 kD  
Observed band size: 54 kD



Paraformaldehyde-fixed, paraffin embedded  
(human brain glioma); Antigen retrieval by  
boiling in sodium citrate buffer (pH6.0) for  
15min; Block endogenous peroxidase by 3%  
hydrogen peroxide for 20 minutes; Blocking  
buffer (normal goat serum) at 37°C for 30min;  
Incubation with (MEF2A) Polyclonal Antibody,  
Unconjugated (bs-1400R) at 1:200 overnight at  
4°C, followed by operating according to SP  
Kit(Rabbit) (sp-0023) instructions and DAB  
staining.



Paraformaldehyde-fixed, paraffin embedded  
(mouse brain tissue); Antigen retrieval by boiling  
in sodium citrate buffer (pH6.0) for 15min; Block  
endogenous peroxidase by 3% hydrogen  
peroxide for 20 minutes; Blocking buffer (normal  
goat serum) at 37°C for 30min; Antibody  
incubation with (MEF2A) Polyclonal Antibody,  
Unconjugated (bs-1400R) at 1:400 overnight at  
4°C, followed by operating according to SP  
Kit(Rabbit) (sp-0023) instructions and DAB  
staining.

## — SELECTED CITATIONS —

---

- **[IF=6.208]** Yue Liu. et al. Genome-Wide Analysis of Circular RNAs Reveals circCHRNA1 Regulates Sheep Myoblast Proliferation via miR-133/SRF and MEF2A Axis. INT J MOL SCI. 2022 Jan;23(24):16065 WB ;Sheep. 36555706