

bs-20602R**[Primary Antibody]****GPM6B Rabbit pAb****Bioss**
ANTIBODIES

www.bioss.com.cn

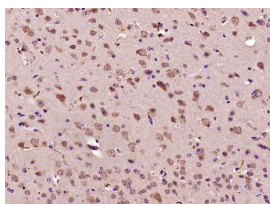
sales@bioss.com.cn

techsupport@bioss.com.cn

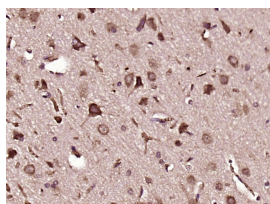
400-901-9800

— DATASHEET —

Host: Rabbit	Isotype: IgG	Applications: IHC-P (1:100-500) IHC-F (1:100-500) IF (1:100-500)
Clonality: Polyclonal		
GeneID: 2824	SWISS: Q13491	
Target: GPM6B		
Immunogen: KLH conjugated synthetic peptide derived from human GPM6B: 81-180/265.		
Purification: affinity purified by Protein A		Reactivity: Mouse, Rat (predicted: Human, Rabbit, Pig, Sheep, Cow, Horse)
Concentration: 1mg/ml		Predicted MW.: 29 kDa
Storage: 0.01M TBS (pH7.4) with 1% BSA, 0.02% Proclin300 and 50% Glycerol. Shipped at 4°C. Store at -20°C for one year. Avoid repeated freeze/thaw cycles.		Subcellular Location: Cell membrane ,Cytoplasm
Background: GPM6B belongs to the myelin proteolipid protein family and is implicated in neural development. It is expressed in neurons and glia; cerebellar Bergmann glia, in glia within white matter tracts of the cerebellum and cerebrum, and in embryonic dorsal root ganglia.		

— VALIDATION IMAGES —

Paraformaldehyde-fixed, paraffin embedded (Mouse brain); Antigen retrieval by boiling in sodium citrate buffer (pH6.0) for 15min; Block endogenous peroxidase by 3% hydrogen peroxide for 20 minutes; Blocking buffer (normal goat serum) at 37°C for 30min; Antibody incubation with (GPM6B) Polyclonal Antibody, Unconjugated (bs-20602R) at 1:400 overnight at 4°C, followed by operating according to SP Kit(Rabbit) (sp-0023) instructions and DAB staining.



Paraformaldehyde-fixed, paraffin embedded (rat brain tissue); Antigen retrieval by boiling in sodium citrate buffer (pH6.0) for 15min; Block endogenous peroxidase by 3% hydrogen peroxide for 20 minutes; Blocking buffer (normal goat serum) at 37°C for 30min; Antibody incubation with (GPM6B) Polyclonal Antibody, Unconjugated (bs-20602R) at 1:400 overnight at 4°C, followed by operating according to SP Kit(Rabbit) (sp-0023) instructions and DAB staining.