

bs-20579R**[Primary Antibody]****CACNB1 Rabbit pAb****BioSS**
ANTIBODIES

www.bioss.com.cn

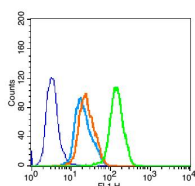
sales@bioss.com.cn

techsupport@bioss.com.cn

400-901-9800

— DATASHEET —

Host: Rabbit	Isotype: IgG	Applications: Flow-Cyt (3µg/Test)
Clonality: Polyclonal		
GeneID: 782	SWISS: Q02641	
Target: CACNB1		
Immunogen: KLH conjugated synthetic peptide derived from human CACNB1: 1-100/568.		
Purification: affinity purified by Protein A		
Concentration: 1mg/ml		
Storage: 0.01M TBS (pH7.4) with 1% BSA, 0.02% Proclin300 and 50% Glycerol. Shipped at 4°C. Store at -20°C for one year. Avoid repeated freeze/thaw cycles.		Reactivity: Human (predicted: Mouse, Rat, Rabbit, Pig, Sheep, Cow, Horse)
Background: The protein encoded by CACNB1 belongs to the calcium channel beta subunit family. It plays an important role in the calcium channel by modulating G protein inhibition, increasing peak calcium current, controlling the alpha-1 subunit membrane targeting and shifting the voltage dependence of activation and inactivation.		Predicted MW.: 66 kDa
		Subcellular Location: Cell membrane ,Cytoplasm

— VALIDATION IMAGES —

Blank control (blue line): MCF 7 (fixed with 70% methanol (Overnight at 4°C) and then permeabilized with 90% ice-cold methanol for 30 min on ice). Primary Antibody (green line): Rabbit Anti-CACNB1 antibody (bs-20579R), Dilution: 3µg /10⁵ cells; Isotype Control Antibody (orange line): Rabbit IgG . Secondary Antibody (white blue line): Goat anti-rabbit IgG-FITC