

bs-20595R**[Primary Antibody]****Bioss**
ANTIBODIES

www.bioss.com.cn

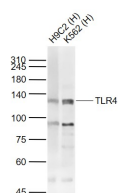
sales@bioss.com.cn

techsupport@bioss.com.cn

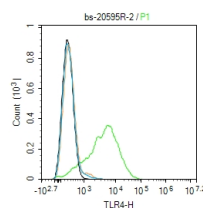
400-901-9800

TLR4 Rabbit pAb**DATASHEET**

Host: Rabbit	Isotype: IgG	Applications: WB (1:500-2000) Flow-Cyt (1µg/Test)
Clonality: Polyclonal		Reactivity: Human (predicted: Mouse, Rat, Pig, Sheep, Cow)
GeneID: 7099	SWISS: O00206	
Target: TLR4		Predicted MW.: 90 kDa
Immunogen: KLH conjugated synthetic peptide derived from human TLR4: 121-200/839.		Subcellular Location: Cell membrane ,Cytoplasm
Purification: affinity purified by Protein A		
Concentration: 1mg/ml		
Storage: 0.01M TBS (pH7.4) with 1% BSA, 0.02% Proclin300 and 50% Glycerol. Shipped at 4°C. Store at -20°C for one year. Avoid repeated freeze/thaw cycles.		
Background: The Toll-like receptor 4 by activating natural immunity, specific immune response involved in the start-up, Toll-like receptor 4 as an important signal transduction transmembrane receptor involved in the toxin-induced inflammation in the pathological process, its mechanisms of control On a growing concern. all regions were either double-stranded or sequenced with an alternate chemistry or covered by high quality data(i.e., phred quality >=30); an attempt was made to resolve all sequencing problems, such as compressions and repeats; all regions were covered by at least one subclone; and the assembly was confirmed by restriction digest, except on the rare occasion of the clone being a YAC. The following abbreviations are used to associate primary accession numbers given in the feature table with their source databases: Em:, EMBL; Sw:, SWISSPROT; Tr:, TREMBL; Wp:, WORMPEP; Information on the WORMPEP database can be found at. TLR-4 plays an important role in microvascular leakage and leukocyte adhesion under the inflammatory condition associated with nonseptic thermal injury.		

VALIDATION IMAGES

Sample: Lane 1: H9C2 (Human) Cell Lysate at 30 ug
Lane 2: K562 (Human) Cell Lysate at 30 ug
Primary: Anti-TLR4 (bs-20595R) at 1/1000 dilution
Secondary: IRDye800CW Goat Anti-Rabbit IgG at 1/20000 dilution
Predicted band size: 110 kD
Observed band size: 110 kD



Blank control: K562. Primary Antibody (green line): Rabbit Anti-TLR4 antibody (bs-20595R)
Dilution: 0.5ug/Test; Secondary Antibody (white line): Goat anti-rabbit IgG-AF488 Dilution: 0.5ug/Test. Isotype control (orange line): Normal Rabbit IgG Protocol
The cells were incubated in 5% BSA to block non-specific protein-protein interactions for 30 min at room temperature. Cells stained with Primary Antibody for 30 min at room temperature. The secondary antibody used for 40 min at room temperature. Acquisition of 20,000 events was performed.

— SELECTED CITATIONS —

- **[IF=8.8]** Hai Xiao. et al. Astrocyte-targeted siRNA delivery by adenosine-functionalized LNP in mouse TBI model. MOL THER-NUCL ACIDS. 2023 Dec;34: WB ;Mouse. 10.1016/j.omtn.2023.102065
- **[IF=7.7]** Pengfei Zhang. et al. Artemisia argyi polysaccharide alleviates osmotic diarrhea by enhancing intestinal barrier protection and anti-inflammation. INT J BIOL MACROMOL. 2024 Oct;;136779 WB ;Rat. 39442837
- **[IF=6.475]** Yongli Zhang. et al. Licorice extract ameliorates hyperglycemia through reshaping gut microbiota structure and inhibiting TLR4/NF-κB signaling pathway in type 2 diabetic mice. Food Res Int. 2022 Mar;153:110945 WB ;Mouse. 10.1016/j.foodres.2022.110945
- **[IF=6.291]** Peng Zheng. et al. Alleviative effect of melatonin on the decrease of uterine receptivity caused by blood ammonia through ROS/NF-κB pathway in dairy cow. Ecotox Environ Safe. 2022 Feb;231:113166 WB ;Bovine. 35030520
- **[IF=5.004]** Heng Wen. et al. Tetrahydropalmatine induces the polarization of M1 macrophages to M2 to relieve limb ischemia-reperfusion-induced lung injury via inhibiting the TLR4/NF-κB/NLRP3 signaling pathway. DRUG DEVELOP RES. 2022 Aug;; WB ;Rat,Human. 35976115