

bs-20497R**[Primary Antibody]**

Bioss
ANTIBODIES

www.bioss.com.cn

sales@bioss.com.cn

techsupport@bioss.com.cn

400-901-9800

Leptin receptor Rabbit pAb**— DATASHEET —**

Host: Rabbit
Clonality: Polyclonal
GeneID: 3953
Target: Leptin receptor
Immunogen: KLH conjugated synthetic peptide derived from human Leptin receptor: 561-660/1165.
Purification: affinity purified by Protein A
Concentration: 1mg/ml

Isotype: IgG**SWISS:** P48357

Storage: 0.01M TBS (pH7.4) with 1% BSA, 0.02% Proclin300 and 50% Glycerol.
 Shipped at 4°C. Store at -20°C for one year. Avoid repeated freeze/thaw cycles.

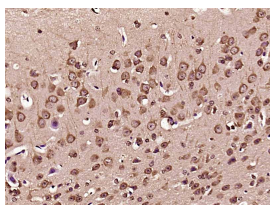
Background: The protein encoded by this gene belongs to the gp130 family of cytokine receptors that are known to stimulate gene transcription via activation of cytosolic STAT proteins. This protein is a receptor for leptin (an adipocyte-specific hormone that regulates body weight), and is involved in the regulation of fat metabolism, as well as in a novel hematopoietic pathway that is required for normal lymphopoiesis. Mutations in this gene have been associated with obesity and pituitary dysfunction. Alternatively spliced transcript variants encoding different isoforms have been described for this gene. It is noteworthy that this gene and LEPROT gene (GeneID:54741) share the same promoter and the first 2 exons, however, encode distinct proteins (PMID:9207021).[provided by RefSeq, Nov 2010]

Applications: IHC-P (1:100-500)**IHC-F** (1:100-500)**IF** (1:100-500)**Flow-Cyt** (1µg/Test)

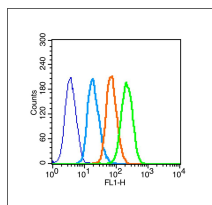
Reactivity: Human, Mouse
 (predicted: Rabbit, Pig, Sheep, Cow, Chicken, Dog)

Predicted MW.: 103/132 kDa

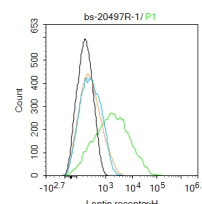
Subcellular Location: Secreted ,Cell membrane

— VALIDATION IMAGES —

Paraformaldehyde-fixed, paraffin embedded (Mouse brain); Antigen retrieval by boiling in sodium citrate buffer (pH6.0) for 15min; Block endogenous peroxidase by 3% hydrogen peroxide for 20 minutes; Blocking buffer (normal goat serum) at 37°C for 30min; Antibody incubation with (Leptin receptor) Polyclonal Antibody, Unconjugated (bs-20497R) at 1:400 overnight at 4°C, followed by operating according to SP Kit(Rabbit) (sp-0023) instructions and DAB staining.



Blank control (Black line): Raji (Black). Primary Antibody (green line): Rabbit Anti-Leptinreceptor antibody (bs-20497R) Dilution: 1µg /10⁶ cells; Isotype Control Antibody (orange line): Rabbit IgG . Secondary Antibody (white blue line): Goat anti-rabbit IgG-PE Dilution: 1µg /test. Protocol The cells were fixed with 70% ice-cold methanol overnight at 4°C and then permeabilized with 0.1% PBS-Tween for 20 min at room temperature . Cells stained with Primary Antibody for 30 min at room temperature. The cells were then incubated in 1 X PBS/2%BSA/10% goat serum to block non-specific protein-protein interactions followed by the antibody for 15 min at room temperature. The secondary antibody used for 40 min at room temperature. Acquisition of 20,000 events was performed.



Blank control:Hela. Primary Antibody (green line): Rabbit Anti-Leptin receptor antibody (bs-20497R) Dilution: 1ug/Test; Secondary Antibody (white blue line) : Goat anti-rabbit IgG-AF488 Dilution: 0.5ug/Test. Isotype control (orange line) : Normal Rabbit IgG Protocol The cells were incubated in 5%BSA to block non-specific protein-protein interactions for 30 min at room temperature .Cells stained with Primary Antibody for 30 min at room temperature. The secondary antibody used for 40 min at room temperature. Acquisition of 20,000 events was performed.