

**bs-3668R**

**[ Primary Antibody ]**

## Brs3 Rabbit pAb

**Bioss**  
ANTIBODIES

www.bioss.com.cn

sales@bioss.com.cn

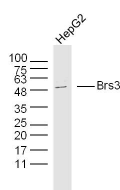
techsupport@bioss.com.cn

400-901-9800

### — DATASHEET —

<b>Host:</b> Rabbit	<b>Isotype:</b> IgG	<b>Applications:</b> WB (1:500-2000)
<b>Clonality:</b> Polyclonal		<b>Reactivity:</b> Human (predicted: Mouse, Rat, Rabbit, Pig, Sheep, Cow, Horse)
<b>GeneID:</b> 680	<b>SWISS:</b> P32247	<b>Predicted MW.:</b> 44 kDa
<b>Target:</b> Brs3		<b>Subcellular Location:</b> Cell membrane
<b>Immunogen:</b> KLH conjugated synthetic peptide derived from human Brs3/Bombesin Receptor 3: 8-110/399. < Extracellular >		
<b>Purification:</b> affinity purified by Protein A		
<b>Concentration:</b> 1mg/ml		
<b>Storage:</b> 0.01M TBS (pH7.4) with 1% BSA, 0.02% Proclin300 and 50% Glycerol. Shipped at 4°C. Store at -20°C for one year. Avoid repeated freeze/thaw cycles.		
<b>Background:</b> Bombesin Receptor 3 expression has been reported in lung (normal and cancer), nasal mucosa, placenta, and uterus. ESTs have been isolated from normal brain and kidney cancer libraries. It has a role in sperm cell division, maturation, or function. This receptor mediates its action by association with G proteins that activate a phosphatidylinositol-calcium second messenger system.		

### — VALIDATION IMAGES —



Sample: HepG2 Cell (Human) Lysate at 30 ug  
Primary: Anti- Brs3 (bs-3668R) at 1/300 dilution  
Secondary: IRDye800CW Goat Anti-Rabbit IgG at 1/20000 dilution  
Predicted band size: 44 kD  
Observed band size: 44 kD