

bs-0563R**[Primary Antibody]****BioSS**
ANTIBODIES

www.bioss.com.cn

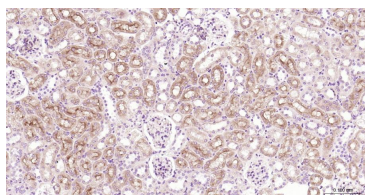
sales@bioss.com.cn

techsupport@bioss.com.cn

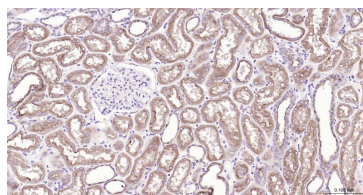
400-901-9800

MDR1 Rabbit pAb**— DATASHEET —**

Host: Rabbit	Isotype: IgG	Applications: IHC-P (1:100-500) IHC-F (1:100-500) IF (1:100-500)
Clonality: Polyclonal		Reactivity: Human, Mouse, Rat
GeneID: 5243	SWISS: P08183	
Target: MDR1		
Immunogen: KLH conjugated synthetic peptide derived from human MDR1: 21-100/1272. < Cytoplasmic >		
Purification: affinity purified by Protein A		
Concentration: 1mg/ml		Predicted MW.: 141 kDa
Storage: 0.01M TBS (pH7.4) with 1% BSA, 0.02% Proclin300 and 50% Glycerol. Shipped at 4°C. Store at -20°C for one year. Avoid repeated freeze/thaw cycles.		Subcellular Location: Cell membrane
Background: bs-1468P is one synthetic peptide derived from human MDR1. P Glycoprotein, the product of the MDR1 gene, is expressed in distinct non-malignant cells, typically cells with secretory and excretory functions. It is assumed to function as an ATP-dependent drug efflux pump with broad substrate specificity. The highest expression of P Glycoprotein has been observed in kidney (proximal tubules), liver (bile canaliculi), adrenal gland and intestine, suggesting that the primary role of P Glycoprotein is in the normal secretion of physiological metabolites and ingested chemicals into bile, urine and the lumen of the intestinal tract. Elevated levels of P Glycoprotein have also been reported in multidrug-resistant cell lines and in colon, endometrial, ovarian, and breast tumors, as well as in sarcomas and leukemias / lymphomas.		

— VALIDATION IMAGES —

Paraformaldehyde-fixed, paraffin embedded Mouse Kidney; Antigen retrieval by boiling in sodium citrate buffer (pH6.0) for 15 min; Antibody incubation with MDR1 Polyclonal Antibody, Unconjugated (bs-0563R) at 1:200 overnight at 4°C, followed by conjugation to the bs-0295G-HRP and DAB (C-0010) staining.



Paraformaldehyde-fixed, paraffin embedded Human Kidney; Antigen retrieval by boiling in sodium citrate buffer (pH6.0) for 15 min; Antibody incubation with MDR1 Polyclonal Antibody, Unconjugated (bs-0563R) at 1:200 overnight at 4°C, followed by conjugation to the bs-0295G-HRP and DAB (C-0010) staining.

— SELECTED CITATIONS —

- **[IF=9.727]** Hiroshi Kikuchi et al. Chemotherapy-Induced IL8 Upregulates MDR1/ABCB1 in Tumor Blood Vessels and Results in Unfavorable Outcome. Cancer Res . 2020 Jul 15;80(14):2996-3008. Other ;. 32536602
- **[IF=6.93]** Peng, Lei, et al. "Development of a novel orthotopic non-small cell lung cancer model and therapeutic benefit of 2'-(2-bromohexadecanoyl)-docetaxel conjugate nanoparticles." Nanomedicine: Nanotechnology, Biology and Medicine (2014). IHC ;="Mouse". 24709328
- **[IF=7.3]** Jinhua Gu. et al. Deciphering the mechanism of Peptostreptococcus anaerobius-induced chemoresistance in

Important Note: This product as supplied is intended for research use only, not for use in human, therapeutic or diagnostic applications.

colorectal cancer: the important roles of MDSC recruitment and EMT activation. FRONT IMMUNOL. 2023; 14: 1230681 WB ;Mouse. 37781363

- **[IF=7.149]** Yuan P et al. WS2 Nanosheets at Noncytotoxic Concentrations Enhance the Cytotoxicity of Organic Pollutants by Disturbing the Plasma Membrane and Efflux Pumps. Environ Sci Technol. 2020 Feb 4;54(3):1698-1709. WB ;Mouse&Human. 31916439
- **[IF=5.4]** Jialing Sun. et al. Investigating the molecular mechanism of Qizhu anticancer prescription in inhibiting hepatocellular carcinoma based on high-resolution mass spectrometry and network pharmacology. J ETHNOPHARMACOL. 2024 Feb;:117985 WB ;Mouse. 38417600