

bs-3920R

[Primary Antibody]

ADCY2 Rabbit pAb

Bioss
ANTIBODIES

www.bioss.com.cn

sales@bioss.com.cn

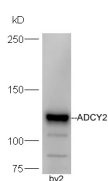
techsupport@bioss.com.cn

400-901-9800

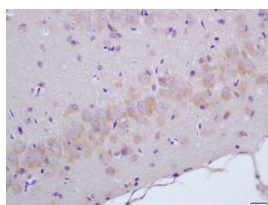
— DATASHEET —

Host: Rabbit	Isotype: IgG	Applications: WB (1:500-2000) IHC-P (1:100-500) IHC-F (1:100-500) IF (1:100-500) Reactivity: Mouse, Rat (predicted: Human, Rabbit, Pig, Sheep, Cow, Chicken, Horse) Predicted MW.: 124 kDa Subcellular Location: Cell membrane
Clonality: Polyclonal		
GeneID: 108	SWISS: Q08462	
Target: ADCY2		
Immunogen: KLH conjugated synthetic peptide derived from human ADCY2: 901-1091/1091.		
Purification: affinity purified by Protein A		
Concentration: 1mg/ml		
Storage: 0.01M TBS (pH7.4) with 1% BSA, 0.02% Proclin300 and 50% Glycerol. Shipped at 4°C. Store at -20°C for one year. Avoid repeated freeze/thaw cycles.		
Background: ADCY2 is a membrane-bound, calmodulin-insensitive adenylyl cyclase.		

— VALIDATION IMAGES —



Sample: BV2 Cell (Mouse) Lysate at 40 ug
Primary: Anti- ADCY2 (bs-3920R) at 1/300 dilution
Secondary: HRP conjugated Goat-Anti-rabbit IgG (bs-0295G-HRP) at 1/5000 dilution Predicted band size: 124 kD Observed band size: 124 kD



Tissue/cell: rat brain tissue; 4% Paraformaldehyde-fixed and paraffin-embedded; Antigen retrieval: citrate buffer (0.01M, pH 6.0), Boiling bathing for 15min; Block endogenous peroxidase by 3% Hydrogen peroxide for 30min; Blocking buffer (normal goat serum,C-0005) at 37°C for 20 min; Incubation: Anti-ADCY2 Polyclonal Antibody, Unconjugated(bs-3920R) 1:200, overnight at 4°C, followed by conjugation to the secondary antibody(SP-0023) and DAB(C-0010) staining

— SELECTED CITATIONS —

- **[IF=5.108]** Yang Z et al.
A pilot study on polycystic ovarian syndrome caused by neonatal exposure to tributyltin and bisphenol A in rats. Chemosphere. 2019 Sep;231:151-160. WB ;Rat. 31129395