
alpha Tubulin (Acetyl Lys40) Mouse mAb

Catalog Number: bsm-33235M

Target Protein: alpha Tubulin (Acetyl Lys40)

Concentration: 1mg/ml

Form: Size : 50ul/100ul/200ul

Liquid

Size : 200ug (PBS only)

Lyophilized

Note: Centrifuge tubes before opening. Reconstitute the lyophilized product in distilled water. Optimal concentration should be determined by the end user.

Host: Mouse

Clonality: Monoclonal

Clone No.: 6B5

Isotype: IgG

Applications: WB (1:500-2000)

Reactivity: Human, Mouse, Rat, Zebrafish

Predicted MW: 50 kDa

Entrez Gene: 7277

Swiss Prot: P68366

Source: KLH conjugated synthesised acetylpeptide derived from human alpha Tubulin around the acetylation site of Acetyl Lys40: SD(Ac-K)TI.

Purification: affinity purified by Protein G

Storage: Size : 50ul/100ul/200ul

0.01M TBS (pH7.4) with 1% BSA, 0.02% Proclin300 and 50% Glycerol.

Size : 200ug (PBS only)

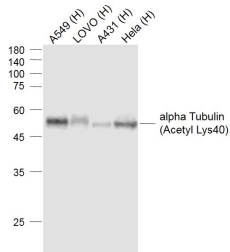
0.01M PBS

Shipped at 4°C. Store at -20°C for one year. Avoid repeated freeze/thaw cycles.

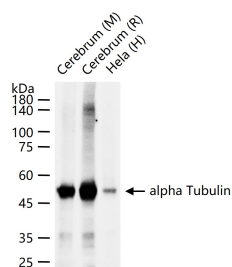
Background: Microtubules of the eukaryotic cytoskeleton perform essential and diverse functions and are composed of a heterodimer of alpha and beta tubulin. The genes encoding these microtubule constituents are part of the tubulin superfamily, which is composed of six distinct families. Genes from the alpha, beta and gamma tubulin families are found in all eukaryotes. The alpha and beta tubulins represent the major components of microtubules, while gamma tubulin plays a critical role in the nucleation of microtubule assembly. There are multiple alpha and beta tubulin genes and they are highly conserved among and

between species. This gene encodes an alpha tubulin that is a highly conserved homolog of a rat testis-specific alpha tubulin. Alternatively spliced transcript variants encoding different isoforms have been found for this gene. [provided by RefSeq, Jun 2013]

VALIDATION IMAGES



Sample: Lane 1: A549 (Human) Cell Lysate at 30 ug Lane 2: LOVO (Human) Cell Lysate at 30 ug Lane 3: A431 (Human) Cell Lysate at 30 ug Lane 4: HeLa (Human) Cell Lysate at 30 ug Primary: Anti-alpha Tubulin (Acetyl Lys40) (bsm-33235M) at 1/1000 dilution Secondary: IRDye800CW Goat Anti-Mouse IgG at 1/20000 dilution Predicted band size: 52 kD Observed band size: 52 kD



25 ug total protein per lane of various lysates (see on figure) probed with alpha Tubulin monoclonal antibody, unconjugated (bsm-33235M) at 1:2000 dilution and 4°C overnight incubation. Followed by conjugated secondary antibody incubation at r.t. for 60 min.

PRODUCT SPECIFIC PUBLICATIONS

[IF=15.828] Chen, Liang-Jian. et al. Gm364 coordinates MIB2/DLL3/Notch2 to regulate female fertility through AKT activation. Cell Death Differ. 2021 Oct;;1-15 IF ; Mouse . 34635817

[IF=15.8] Dan Li. et al. Fish scale-inspired biomimetic nanocoatings on magnesium implants for vascularized bone regeneration in infected bone defects. J MAGNES ALLOY. 2024 Jul;; WB ; Human . 10.1016/j.jma.2024.07.012

[IF=5.039] Peng R et al. The 5.8 S pre - rRNA maturation factor, M - phase phosphoprotein 6, is a female fertility factor required for oocyte quality and meiosis. Cell Proliferation. 2020. ICC ; Mouse . doi:10.1111/cpr.12769

[IF=5.039] Peng RR et al. The 5.8S pre-rRNA maturation factor, M-phase phosphoprotein 6, is a female fertility factor required for oocyte quality and meiosis. Cell Prolif. 2020 Mar;53(3):e12769. WB,IF ; Mouse . 32003502

[IF=4.772] Guoliang Jiang. et al. Homozygous mutation in DNAAF4 causes primary ciliary dyskinesia in a Chinese family.. FRONT GENET. 2022 Dec;13:1087818-1087818 IF ; Human . 36583018