

bs-21291R**[Primary Antibody]****RBM19 Rabbit pAb****BioSS**
ANTIBODIES

www.bioss.com.cn

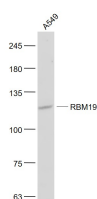
sales@bioss.com.cn

techsupport@bioss.com.cn

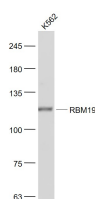
400-901-9800

— DATASHEET —

Host: Rabbit	Isotype: IgG	Applications: WB (1:500-2000)
Clonality: Polyclonal		
GeneID: 9904	SWISS: Q9Y4C8	
Target: RBM19		
Immunogen: KLH conjugated synthetic peptide derived from human RBM19: 1-100/960.		
Purification: affinity purified by Protein A		Reactivity: Human (predicted: Mouse, Rabbit, Pig, Sheep, Cow, Zebrafish, Dog, Horse)
Concentration: 1mg/ml		
Storage: 0.01M TBS (pH7.4) with 1% BSA, 0.02% Proclin300 and 50% Glycerol. Shipped at 4°C. Store at -20°C for one year. Avoid repeated freeze/thaw cycles.		
Background: This gene encodes a nucleolar protein that contains six RNA-binding motifs. The encoded protein may be involved in regulating ribosome biogenesis. Multiple alternatively spliced variants, encoding the same protein, have been identified.[provided by RefSeq, Apr 2009]		
		Predicted MW.: 108 kDa
		Subcellular Location: Nucleus

— VALIDATION IMAGES —

Sample: A549(Human) Cell Lysate at 30 ug
Primary: Anti- RBM19 (bs-21291R) at 1/1000
dilution Secondary: IRDye800CW Goat Anti-
Rabbit IgG at 1/20000 dilution Predicted band
size: 108 kD Observed band size: 108 kD



Sample: K562(Human) Cell Lysate at 30 ug
Primary: Anti- RBM19 (bs-21291R) at 1/1000
dilution Secondary: IRDye800CW Goat Anti-
Rabbit IgG at 1/20000 dilution Predicted band
size: 108 kD Observed band size: 108 kD