

bs-21741R**[Primary Antibody]****BioSS**
ANTIBODIES

www.bioss.com.cn

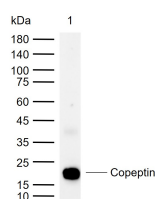
sales@bioss.com.cn

techsupport@bioss.com.cn

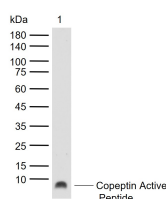
400-901-9800

Copeptin Rabbit pAb**— DATASHEET —**

Host: Rabbit Clonality: Polyclonal GeneID: 551 Target: Copeptin Immunogen: KLH conjugated synthetic peptide derived from human Copeptin: 126-164/164. Purification: affinity purified by Protein A Concentration: 1mg/ml Storage: 0.01M TBS (pH7.4) with 1% BSA, 0.02% Proclin300 and 50% Glycerol. Shipped at 4°C. Store at -20°C for one year. Avoid repeated freeze/thaw cycles. Background: Vasopressin, also known as arginine vasopressin (AVP) or antidiuretic hormone (ADH), is a posterior pituitary hormone that is synthesised in the hypothalamus. Vasopressin is synthesised as a precursor protein that consists of arginine vasopressin and two associated proteins, neurophysin 2 and the glycopeptide copeptin. Vasopressin, together with its carrier protein neurophysin II, is packaged into neurosecretory vesicles and transported axonally to the nerve endings in the neurohypophysis, where it is either stored or secreted into the bloodstream. Vasopressin acts as a growth factor by enhancing pH regulation through acid-base transport systems. It has a direct antidiuretic action on the kidney and also causes vasoconstriction of the peripheral vessels. Vasopressin can also contract smooth muscle during parturition and lactation. It also plays a role in cognition, tolerance, adaptation and complex sexual and maternal behaviour, as well as in the regulation of water excretion and cardiovascular functions. Mutations in the vasopressin precursor cause autosomal dominant neurohypophyseal diabetes insipidus (ADNDI), which is characterised by persistent thirst, polydipsia and polyuria.	Isotype: IgG SWISS: P01185 Applications: WB (1:500-2000) Reactivity: Human Predicted MW.: 18 kDa Subcellular Location: Secreted
---	--

— VALIDATION IMAGES —

Sample: Lane 1: Recombinant human Vasopressin-neurophysin 2-copeptin protein (HEK293)(bs-43179P) Primary: Anti-Copeptin (bs-21741R) at 1/1000 dilution Secondary: IRDye800CW Goat Anti-Rabbit IgG at 1/20000 dilution Predicted band size: 18 kDa Observed band size: 20 kDa



Sample: Lane 1: Copeptin Active Peptide(bs-21741P) Primary: Anti-Copeptin (bs-21741R) at 1/1000 dilution Secondary: IRDye800CW Goat Anti-Rabbit IgG at 1/20000 dilution Predicted band size: 18 kDa Observed band size: 4 kDa