

**bs-7870R****[ Primary Antibody ]****MRP8+MRP14 Rabbit pAb****Bioss**  
**ANTIBODIES**

www.bioss.com.cn

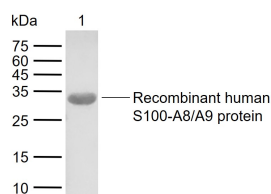
sales@bioss.com.cn

techsupport@bioss.com.cn

400-901-9800

**— DATASHEET —**

<b>Host:</b> Rabbit	<b>Isotype:</b> IgG	<b>Applications:</b> WB (1:500-2000)
<b>Clonality:</b> Polyclonal		<b>Reactivity:</b> Human, Mouse (predicted: Cow, Dog, Horse)
<b>GeneID:</b> 6279	<b>SWISS:</b> P05109	<b>Predicted MW.:</b> 10 kDa
<b>Target:</b> MRP8+MRP14		<b>Subcellular Location:</b> Secreted ,Cell membrane ,Cytoplasm
<b>Immunogen:</b> KLH conjugated synthetic peptide derived from human S100A8+S100A9: 21-93/93.		
<b>Purification:</b> affinity purified by Protein A		
<b>Concentration:</b> 1mg/ml		
<b>Storage:</b> 0.01M TBS (pH7.4) with 1% BSA, 0.02% Proclin300 and 50% Glycerol. Shipped at 4°C. Store at -20°C for one year. Avoid repeated freeze/thaw cycles.		
<b>Background:</b> The protein encoded by this gene is a member of the S100 family of proteins containing 2 EF-hand calcium-binding motifs. S100 proteins are localized in the cytoplasm and/or nucleus of a wide range of cells, and involved in the regulation of a number of cellular processes such as cell cycle progression and differentiation. S100 genes include at least 13 members which are located as a cluster on chromosome 1q21. This protein may function in the inhibition of casein kinase and as a cytokine. Altered expression of this protein is associated with the disease cystic fibrosis. [provided by RefSeq].		

**— VALIDATION IMAGES —**

Sample: Lane 1: Recombinant human S100-A8/A9 protein, His(bs-41227P) Primary: Anti-MRP8+MRP14 (bs-7870R) at 1/1000 dilution  
Secondary: IRDye800CW Goat Anti-Rabbit IgG at 1/20000 dilution Predicted band size: 10 kDa  
Observed band size: 32 kDa