

bs-12656R

[Primary Antibody]

SNRK Rabbit pAb

Bioss
ANTIBODIES

www.bioss.com.cn

sales@bioss.com.cn

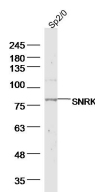
techsupport@bioss.com.cn

400-901-9800

— DATASHEET —

Host: Rabbit	Isotype: IgG	Applications: WB (1:500-2000)
Clonality: Polyclonal		
GeneID: 54861	SWISS: Q9NRH2	Reactivity: Human (predicted: Mouse, Rat, Rabbit, Pig, Sheep, Cow, Zebrafish, Chicken, Dog, GuineaPig, Horse)
Target: SNRK		Predicted MW.: 84 kDa
Immunogen: KLH conjugated synthetic peptide derived from human SNRK: 111-210/765.		Subcellular Location: Nucleus
Purification: affinity purified by Protein A		
Concentration: 1mg/ml		
Storage: 0.01M TBS (pH7.4) with 1% BSA, 0.02% Proclin300 and 50% Glycerol. Shipped at 4°C. Store at -20°C for one year. Avoid repeated freeze/thaw cycles.		
Background: SNRK is a member of the sucrose nonfermenting (SNF)-related kinase family of serine/threonine kinases (Kertesz et al., 2002 [PubMed 12234663]).[supplied by OMIM, Apr 2009]		

— VALIDATION IMAGES —



Sample: SP2/0(Human) Cell Lysate at 40 ug
Primary: Anti-SNRK (bs-12656R) at 1/300 dilution
Secondary: IRDye800CW Goat Anti-Rabbit IgG at 1/20000 dilution Predicted band size: 84 kD
Observed band size: 84 kD