

**bs-12655R****[ Primary Antibody ]****SNPH Rabbit pAb****Bioss**  
**ANTIBODIES**

www.bioss.com.cn

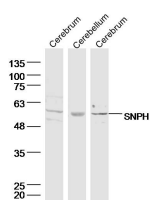
sales@bioss.com.cn

techsupport@bioss.com.cn

400-901-9800

**— DATASHEET —**

<b>Host:</b> Rabbit	<b>Isotype:</b> IgG	<b>Applications:</b> WB (1:500-2000)
<b>Clonality:</b> Polyclonal		<b>Reactivity:</b> Mouse (predicted: Human, Rat, Rabbit, Pig, Sheep, Cow, Dog, Horse)
<b>GeneID:</b> 9751	<b>SWISS:</b> O15079	
<b>Target:</b> SNPH		<b>Predicted MW.:</b> 53 kDa
<b>Immunogen:</b> KLH conjugated synthetic peptide derived from human SNPH: 231-330/494.		<b>Subcellular Location:</b> Cell membrane
<b>Purification:</b> affinity purified by Protein A		
<b>Concentration:</b> 1mg/ml		
<b>Storage:</b> 0.01M TBS (pH7.4) with 1% BSA, 0.02% Proclin300 and 50% Glycerol. Shipped at 4°C. Store at -20°C for one year. Avoid repeated freeze/thaw cycles.		
<b>Background:</b> Syntaxin-1, synaptobrevin/VAMP, and SNAP25 interact to form the SNARE complex, which is required for synaptic vesicle docking and fusion. The protein encoded by this gene is membrane-associated and inhibits SNARE complex formation by binding free syntaxin-1. Expression of this gene appears to be brain-specific. [provided by RefSeq, Jul 2008]		

**— VALIDATION IMAGES —**

Sample: Cerebrum (Mouse) Lysate at 40 ug  
Cerebellum (Mouse) Lysate at 40 ug Cerebrum  
(Mouse) Lysate at 40 ug Primary: Anti-SNPH  
(bs-12655R) at 1/300 dilution Secondary:  
IRDye800CW Goat Anti-Rabbit IgG at 1/20000  
dilution Predicted band size: 53 kD Observed  
band size: 53 kD