

SMYD1 Rabbit pAb

Catalog Number: bs-12647R

Target Protein: SMYD1

Concentration: 1mg/ml

Form: Liquid

Host: Rabbit

Clonality: Polyclonal

Isotype: IgG

Applications: WB (1:500-2000)

Reactivity: Mouse (predicted:Human, Rat, Rabbit, Pig, Sheep, Cow, Dog, Horse)

Predicted MW: 56 kDa

Entrez Gene: 150572

Swiss Prot: Q8NB12

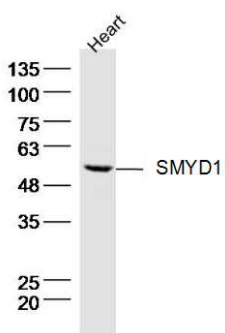
Source: KLH conjugated synthetic peptide derived from human SMYD1: 31-130/490.

Purification: affinity purified by Protein A

Storage: 0.01M TBS (pH7.4) with 1% BSA, 0.02% Proclin300 and 50% Glycerol.

Shipped at 4°C. Store at -20°C for one year. Avoid repeated freeze/thaw cycles.

VALIDATION IMAGES



Sample: Heart(mouse) Lysate at 40 ug Primary: Anti-SMYD1(bs-12647R) at 1/300 dilution Secondary: IRDye800CW Goat Anti-Rabbit IgG at 1/20000 dilution Predicted band size: 56 kD Observed band size: 56 kD