

bs-12641R

[Primary Antibody]

SMPD4 Rabbit pAb

BioSS
ANTIBODIES

www.bioss.com.cn

sales@bioss.com.cn

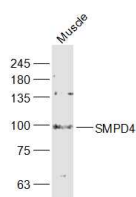
techsupport@bioss.com.cn

400-901-9800

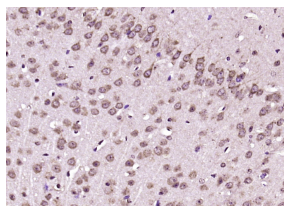
— DATASHEET —

Host: Rabbit	Isotype: IgG	Applications: WB (1:500-2000) IHC-P (1:100-500) IHC-F (1:100-500) IF (1:100-500) Reactivity: Mouse (predicted: Human, Rat, Rabbit, Pig, Cow, Dog, Horse) Predicted MW.: 93 kDa Subcellular Location: Cytoplasm
Clonality: Polyclonal		
GeneID: 55627	SWISS: Q9NXC4	
Target: SMPD4		
Immunogen: KLH conjugated synthetic peptide derived from human SMPD4: 201-300/827.		
Purification: affinity purified by Protein A		
Concentration: 1mg/ml		
Storage: 0.01M TBS (pH7.4) with 1% BSA, 0.02% Proclin300 and 50% Glycerol. Shipped at 4°C. Store at -20°C for one year. Avoid repeated freeze/thaw cycles.		
Background: Sphingomyelinases (EC 3.1.4.12), such as SMPD4, catalyze the hydrolysis of membrane sphingomyelin to form phosphorylcholine and ceramide (Krut et al., 2006 [PubMed 16517606]).[supplied by OMIM, Mar 2008]		

— VALIDATION IMAGES —



Sample: Muscle (Mouse) Lysate at 40 ug Primary:
Anti-SMPD4 (bs-12641R) at 1/1000 dilution
Secondary: IRDye800CW Goat Anti-Rabbit IgG at
1/20000 dilution Predicted band size: 93 kD
Observed band size: 96 kD



Paraformaldehyde-fixed, paraffin embedded (mouse cerebellum); Antigen retrieval by boiling in sodium citrate buffer (pH6.0) for 15min; Block endogenous peroxidase by 3% hydrogen peroxide for 20 minutes; Blocking buffer (normal goat serum) at 37°C for 30min; Antibody incubation with (SMPD4) Polyclonal Antibody, Unconjugated (bs-12641R) at 1:200 overnight at 4°C, followed by operating according to SP Kit(Rabbit) (sp-0023) instructions and DAB staining.