

**bs-14395R****[ Primary Antibody ]****DNASE1L2 Rabbit pAb****Bioss**  
**ANTIBODIES**

www.bioss.com.cn

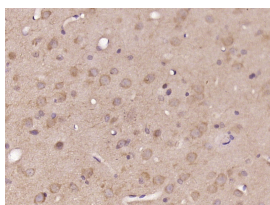
sales@bioss.com.cn

techsupport@bioss.com.cn

400-901-9800

**— DATASHEET —**

<b>Host:</b> Rabbit	<b>Isotype:</b> IgG	<b>Applications:</b> <b>IHC-P</b> (1:100-500) <b>IHC-F</b> (1:100-500) <b>IF</b> (1:100-500)
<b>Clonality:</b> Polyclonal		
<b>GeneID:</b> 1775	<b>SWISS:</b> Q92874	
<b>Target:</b> DNASE1L2		<b>Reactivity:</b> Rat (predicted: Human, Mouse, Rabbit, Pig, Sheep, Cow, Horse)
<b>Immunogen:</b> KLH conjugated synthetic peptide derived from human DNASE1L2: 201-299/299.		
<b>Purification:</b> affinity purified by Protein A		<b>Predicted MW.:</b> 31 kDa
<b>Concentration:</b> 1mg/ml		<b>Subcellular Location:</b> Cytoplasm
<b>Storage:</b> 0.01M TBS (pH7.4) with 1% BSA, 0.02% Proclin300 and 50% Glycerol. Shipped at 4°C. Store at -20°C for one year. Avoid repeated freeze/thaw cycles.		
<b>Background:</b> DNASE1L2 is a 299 amino acid secreted protein that is expressed in brain tissue and shares sequence similarity with DNase I, suggesting a possibly role in DNA hydrolysis. The gene encoding DNASE1L2 maps to human chromosome 16, which encodes over 900 genes and comprises nearly 3% of the human genome. The GAN gene is located on chromosome 16 and, with mutation, may lead to giant axonal neuropathy, a nervous system disorder characterized by increasing malfunction with growth. The rare disorder Rubinstein-Taybi syndrome is also associated with chromosome 16, as is Crohn's disease, which is a gastrointestinal inflammatory condition.		

**— VALIDATION IMAGES —**

Paraformaldehyde-fixed, paraffin embedded (Rat brain); Antigen retrieval by boiling in sodium citrate buffer (pH6.0) for 15min; Block endogenous peroxidase by 3% hydrogen peroxide for 20 minutes; Blocking buffer (normal goat serum) at 37°C for 30min; Antibody incubation with (DNASE1L2) Polyclonal Antibody, Unconjugated (bs-14395R) at 1:400 overnight at 4°C, followed by operating according to SP Kit(Rabbit) (sp-0023) instructions and DAB staining.