

## DNAJC25 Rabbit pAb

Catalog Number: bs-14389R

Target Protein: DNAJC25

Concentration: 1mg/ml

Form: Liquid

Host: Rabbit

Clonality: Polyclonal

Isotype: IgG

Applications: WB (1:500-2000)

Reactivity: Human (predicted:Mouse, Rat, Rabbit, Pig, Sheep, Cow, Chicken, Horse)

Predicted MW: 42 kDa

Subcellular Nucleus

Locations:

Entrez Gene: 548645

Swiss Prot: Q9H1X3

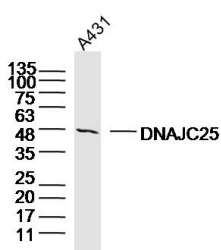
Source: KLH conjugated synthetic peptide derived from human DNAJC25: 281-360/360.

Purification: affinity purified by Protein A

Storage: 0.01M TBS (pH7.4) with 1% BSA, 0.02% Proclin300 and 50% Glycerol.

Shipped at 4°C. Store at -20°C for one year. Avoid repeated freeze/thaw cycles.

### VALIDATION IMAGES



Sample: A431 Cell(Human) Lysate at 40 ug Primary: Anti-DNAJC25(bs-14389R) at 1/300 dilution Secondary: IRDye800CW Goat Anti-Rabbit IgG at 1/20000 dilution Predicted band size: 42kD Observed band size: 48kD