
GHRHR Rabbit pAb

Catalog Number: bs-11794R

Target Protein: GHRHR

Concentration: 1mg/ml

Form: Liquid

Host: Rabbit

Clonality: Polyclonal

Isotype: IgG

Applications: WB (1:500-2000)

Reactivity: Human, Mouse, Rat (predicted:Dog, Horse)

Predicted MW: 45 kDa

Subcellular: Cell membrane

Locations:

Entrez Gene: 2692

Swiss Prot: Q02643

Source: KLH conjugated synthetic peptide derived from human GHRHR: 101-200/423.

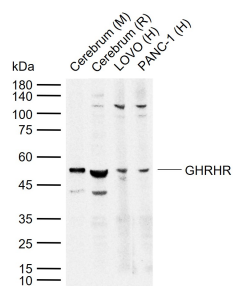
Purification: affinity purified by Protein A

Storage: 0.01M TBS (pH7.4) with 1% BSA, 0.02% Proclin300 and 50% Glycerol.

Shipped at 4°C. Store at -20°C for one year. Avoid repeated freeze/thaw cycles.

Background: GHRH-R is a seven transmembrane domain protein that localizes to the somatotroph of the pituitary. GHRH-R plays an important role in growth and acts as a high-affinity receptor for GHRH. Binding of GHRH leads to the coupling of GHRH-R to G-protein which stimulates increased adenylyl cyclase activity and the accumulation of cAMP leading to the synthesis and release of growth hormone and somatotroph proliferation. In addition, this signalling pathway may have direct action in fetal/placental development, reproduction and immune function. GHRH and GHRH-R may also play a role in the regulation of non-rapid eye movement sleep (NREMS). The expression of GHRH-R is dependent on the presence of the POU domain factor Pit-1. Mutations in the gene encoding this protein can result in isolated growth hormone deficiency (IGHD), also known as Dwarfism of Sindh, and anterior pituitary hypoplasia (APH).

VALIDATION IMAGES



Sample: Lane 1: Mouse Cerebrum tissue lysates Lane 2: Rat Cerebrum tissue lysates Lane 3: Human LOVO cell lysates Lane 4: Human PANC-1 cell lysates Primary: Anti-GHRHR (bs-11794R) at 1/1000 dilution Secondary: IRDye800CW Goat Anti-Rabbit IgG at 1/20000 dilution Predicted band size: 45 kDa Observed band size: 50 kDa