

bs-9576R**[Primary Antibody]****Bioss**
ANTIBODIES

www.bioss.com.cn

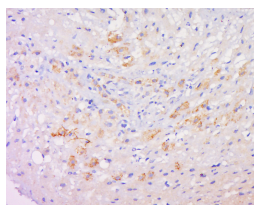
sales@bioss.com.cn

techsupport@bioss.com.cn

400-901-9800

Copine-6 Rabbit pAb**— DATASHEET —**

Host: Rabbit	Isotype: IgG	Applications: IHC-P (1:100-500) IHC-F (1:100-500) IF (1:100-500)
Clonality: Polyclonal		
GeneID: 9362	SWISS: O95741	
Target: Copine-6		Reactivity: Human (predicted: Mouse, Rat, Rabbit, Pig, Sheep, Horse)
Immunogen: KLH conjugated synthetic peptide derived from human Copine-6: 221-320/557.		
Purification: affinity purified by Protein A		Predicted MW.: 62 kDa
Concentration: 1mg/ml		Subcellular Location: Cell membrane ,Cytoplasm
Storage: 0.01M TBS (pH7.4) with 1% BSA, 0.02% Proclin300 and 50% Glycerol. Shipped at 4°C. Store at -20°C for one year. Avoid repeated freeze/thaw cycles.		
Background: Copine 6 is a 557 amino acid member of the copine family of evolutionarily conserved, soluble, calcium-dependent, membrane-binding proteins. Members of the copine family are involved in signal transduction and membrane trafficking. Arabidopsis thaliana mutants lacking copine proteins exhibit reduced cell number and smaller cell size, effects which may be due to a defect in vesicle fusion or transport. Copine 6 contains two N-terminal C2 domains and one C-terminal VWFA (von Willebrand factor A) domain, which is also referred to as the A domain or the core domain. As is characteristic of the copine family, copine 6 functions in membrane trafficking and is capable of binding phospholipids in a calcium-dependent manner. Copine 6 may also play a role in synaptic plasticity.		

— VALIDATION IMAGES —

Tissue/cell: human liver carcinoma; 4% Paraformaldehyde-fixed and paraffin-embedded; Antigen retrieval: citrate buffer (0.01M, pH 6.0), Boiling bathing for 15min; Block endogenous peroxidase by 3% Hydrogen peroxide for 30min; Blocking buffer (normal goat serum, C-0005) at 37°C for 20 min; Incubation: Anti-Copine-6 Polyclonal Antibody, Unconjugated(bs-9576R) 1:500, overnight at 4°C, followed by conjugation to the secondary antibody(SP-0023) and DAB(C-0010) staining