

**bs-20288R****[ Primary Antibody ]****phospho-TUBB3 (Ser172) Rabbit pAb****BioSS**  
**ANTIBODIES**

www.bioss.com.cn

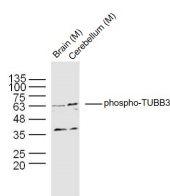
sales@bioss.com.cn

techsupport@bioss.com.cn

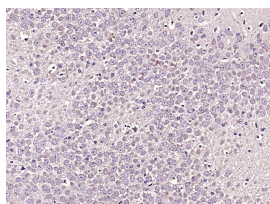
400-901-9800

**— DATASHEET —**

<b>Host:</b> Rabbit	<b>Isotype:</b> IgG	<b>Applications:</b> <b>WB</b> (1:500-2000)
<b>Clonality:</b> Polyclonal		<b>IHC-P</b> (1:100-500)
<b>GeneID:</b> 10381	<b>SWISS:</b> Q13509	<b>IHC-F</b> (1:100-500)
<b>Target:</b> TUBB3 (Ser172)		<b>IF</b> (1:100-500)
<b>Immunogen:</b> KLH conjugated Synthesised phosphopeptide derived from human TUBB3 around the phosphorylation site of Ser172: VP(p-S)PK.		<b>Reactivity:</b> Mouse, Rat (predicted: Human, Rabbit)
<b>Purification:</b> affinity purified by Protein A		
<b>Concentration:</b> 1mg/ml		<b>Predicted MW.:</b> 50-55 kDa
<b>Storage:</b> Preservative: 0.02% Proclin300, Constituents: 1% BSA, 0.01M PBS, pH7.4. Shipped at 4°C. Store at -20°C for one year. Avoid repeated freeze/thaw cycles.		<b>Subcellular Location:</b> Cytoplasm
<b>Background:</b> Neuronal Marker Beta III tubulin is abundant in the central and peripheral nervous systems (CNS and PNS) where it is prominently expressed during fetal and postnatal development. As exemplified in cerebellar and sympathoadrenal neurogenesis, the distribution of beta III is neuron-associated, exhibiting distinct temporospatial gradients according to the regional neuroepithelia of origin. However, transient expression of this protein is also present in the subventricular zones of the CNS comprising putative neuronal- and/or glial precursor cells, as well as in Kulchitsky neuroendocrine cells of the fetal respiratory epithelium. This temporally restricted, potentially non-neuronal expression may have implications in the identification of presumptive neurons derived from embryonic stem cells.		

**— VALIDATION IMAGES —**

Sample: Brain (Mouse) Lysate at 40 ug  
Cerebellum (Mouse) Lysate at 40 ug  
Primary: Anti- p-TUBB3 (Ser172) (bs-20288R) at 1/300  
dilution  
Secondary: IRDye800CW Goat Anti-Rabbit IgG at 1/20000 dilution  
Predicted band size: 50/55 kD  
Observed band size: 63 kD



Paraformaldehyde-fixed, paraffin embedded (Rat brain); Antigen retrieval by microwave in sodium citrate buffer (pH6.0); Block endogenous peroxidase by 3% hydrogen peroxide for 30 minutes; Blocking buffer (3% BSA) at RT for 30min; Antibody incubation with (phospho-TUBB3 (Ser172)) Polyclonal Antibody, Unconjugated (bs-20288R) at 1:400 overnight at 4°C, followed by conjugation to the secondary antibody (labeled with HRP) and DAB staining.