

**bs-9900R****[ Primary Antibody ]****Bioss**  
ANTIBODIES

www.bioss.com.cn

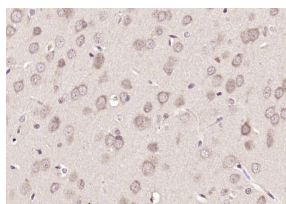
sales@bioss.com.cn

techsupport@bioss.com.cn

400-901-9800

**PAFAH1B2 Rabbit pAb****— DATASHEET —**

<b>Host:</b> Rabbit	<b>Isotype:</b> IgG	<b>Applications:</b> <b>IHC-P</b> (1:100-500) <b>IHC-F</b> (1:100-500) <b>IF</b> (1:100-500)  <b>Reactivity:</b> Rat (predicted: Human, Mouse, Sheep, Horse)  <b>Predicted MW.:</b> 25 kDa  <b>Subcellular Location:</b> Cytoplasm
<b>Clonality:</b> Polyclonal		
<b>GeneID:</b> 5049	<b>SWISS:</b> P68402	
<b>Target:</b> PAFAH1B2		
<b>Immunogen:</b> KLH conjugated synthetic peptide derived from human PAFAH1B2: 101-200/229.		
<b>Purification:</b> affinity purified by Protein A		
<b>Concentration:</b> 1mg/ml		
<b>Storage:</b> 0.01M TBS (pH7.4) with 1% BSA, 0.02% Proclin300 and 50% Glycerol. Shipped at 4°C. Store at -20°C for one year. Avoid repeated freeze/thaw cycles.		
<b>Background:</b> PAFAH1B2, also known as PAFAHB, is a 229 amino acid cytoplasmic protein that belongs to the GDSL lipolytic enzyme family and the platelet-activating factor acetylhydrolase IB beta/gamma subunits subfamily. A ubiquitously expressed catalytic subunit of the cytosolic PAFAH1B heterotrimeric complex, PAFAH1B2 inactivates PAF by removing the acetyl group at the sn-2 position. Along with the beta subunit, PAFAH1B is made up of alpha and gamma subunits. The gene that encodes PAFAH1B2 consists of approximately 32,628 bases and maps to human chromosome 11q23.3. Chromosome 11 houses over 1,400 genes and comprises nearly 4% of the human genome. Jervell and Lange-Nielsen syndrome, Jacobsen syndrome, Niemann-Pick disease, hereditary angioedema and Smith-Lemli-Opitz syndrome are associated with defects in genes that map to chromosome 11.		

**— VALIDATION IMAGES —**

Paraformaldehyde-fixed, paraffin embedded (rat brain); Antigen retrieval by boiling in sodium citrate buffer (pH6.0) for 15min; Block endogenous peroxidase by 3% hydrogen peroxide for 20 minutes; Blocking buffer (normal goat serum) at 37°C for 30min; Antibody incubation with (PAFAH1B2) Polyclonal Antibody, Unconjugated (bs-9900R) at 1:200 overnight at 4°C, followed by operating according to SP Kit(Rabbit) (sp-0023) instructions and DAB staining.