

**bs-9898R****[ Primary Antibody ]****SISP1 Rabbit pAb****BioSS**  
**ANTIBODIES**

www.bioss.com.cn

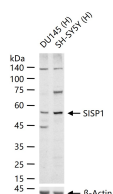
sales@bioss.com.cn

techsupport@bioss.com.cn

400-901-9800

**— DATASHEET —**

<b>Host:</b> Rabbit	<b>Isotype:</b> IgG	<b>Applications:</b> WB (1:500-2000)
<b>Clonality:</b> Polyclonal		<b>Reactivity:</b> Human
<b>GeneID:</b> 64115	<b>SWISS:</b> Q9H7M9	
<b>Target:</b> SISP1		
<b>Immunogen:</b> KLH conjugated synthetic peptide derived from human SISP1/GI24: 21-120/311. < Extracellular >		<b>Predicted MW.:</b> 31 kDa
<b>Purification:</b> affinity purified by Protein A		<b>Subcellular Location:</b> Cell membrane
<b>Concentration:</b> 1mg/ml		
<b>Storage:</b> 0.01M TBS (pH7.4) with 1% BSA, 0.02% Proclin300 and 50% Glycerol. Shipped at 4°C. Store at -20°C for one year. Avoid repeated freeze/thaw cycles.		
<b>Background:</b> Platelet receptor GI24, also known as SISP1 or PP2135, is a 311 amino acid single-pass type I membrane protein that contains one Ig-like (immunoglobulin-like) domain. GI24 is thought to contribute to tumor-invasive growth in the collagen matrix and is encoded by a gene that maps to human chromosome 10q22.1. Chromosome 10 contains over 800 genes, 135 million nucleotides and comprises nearly 4.5% of the human genome. PTEN is an important tumor suppressor gene located on chromosome 10 and, when defective, causes a genetic predisposition to cancer development known as Cowden syndrome. The chromosome 10 encoded gene ERCC6 is important for DNA repair and is linked to Cockayne syndrome which is characterized by extreme photosensitivity and premature aging. Tetrahydrobiopterin deficiency and a number of syndromes involving defective skull and facial bone fusion are also linked to chromosome 10. As with most trisomies, trisomy 10 is rare and is deleterious.		

**— VALIDATION IMAGES —**

25 ug total protein per lane of various lysates (see on figure) probed with SISP1 polyclonal antibody, unconjugated (bs-9898R) at 1:1000 dilution and 4°C overnight incubation. Followed by conjugated secondary antibody incubation at r.t. for 60 min.