

bs-4736R**[Primary Antibody]****Bioss**
ANTIBODIES

www.bioss.com.cn

sales@bioss.com.cn

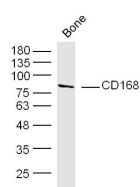
techsupport@bioss.com.cn

400-901-9800

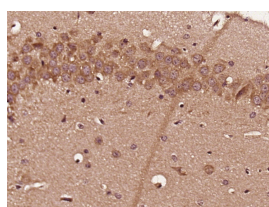
CD168 Rabbit pAb**— DATASHEET —****Host:** Rabbit**Isotype:** IgG**Clonality:** Polyclonal**GeneID:** 3161**SWISS:** O75330**Target:** CD168**Immunogen:** KLH conjugated synthetic peptide derived from human CD168/RHAMM: 51-150/725.**Purification:** affinity purified by Protein A**Concentration:** 1mg/ml**Storage:** 0.01M TBS (pH7.4) with 1% BSA, 0.02% Proclin300 and 50% Glycerol.

Shipped at 4°C. Store at -20°C for one year. Avoid repeated freeze/thaw cycles.

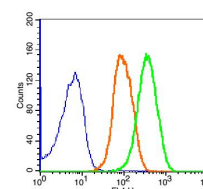
Background: The CD168 antigen is a non-integral cell surface hyaluronan receptor and intracellular protein. When hyaluronan binds to CD168, the phosphorylation of a number of proteins, including the focal adhesion kinase occurs. CD168 activation regulates various cellular processes including cell migration, proliferation, signaling, regulation of gene expression, cell differentiation, morphogenesis, and metastasis via both extracellular and intracellular pathways. CD168 is involved in cellular transformation and metastasis formation, and in regulating extracellular-regulated kinase (ERK) activity. CD168 is also a subunit of the HARC complex. CD168 knockdown in human embryonic stem cells results in downregulation of several pluripotency markers, induction of early extraembryonic lineages, loss of cell viability, and changes in cell cycle.

Applications: WB (1:500-2000)**IHC-P** (1:100-500)**IHC-F** (1:100-500)**IF** (1:100-500)**Flow-Cyt** (1µg/Test)**Reactivity:** Human, Mouse
(predicted: Rat, Cow, Horse)**Predicted
MW.:** 84 kDa**Subcellular
Location:** Extracellular matrix ,Cell
membrane ,Cytoplasm**— VALIDATION IMAGES —**

Sample: Bone (Mouse) Lysate at 40 ug Primary:
Anti-CD168 (bs-4736R) at 1/300 dilution
Secondary: IRDye800CW Goat Anti-Rabbit IgG at
1/20000 dilution Predicted band size: 84 kD
Observed band size: 84 kD



Paraformaldehyde-fixed, paraffin embedded
(Mouse brain); Antigen retrieval by boiling in
sodium citrate buffer (pH6.0) for 15min; Block
endogenous peroxidase by 3% hydrogen
peroxide for 20 minutes; Blocking buffer (normal
goat serum) at 37°C for 30min; Antibody
incubation with (CD168) Polyclonal Antibody,
Unconjugated (bs-4736R) at 1:400 overnight at
4°C, followed by operating according to SP
Kit(Rabbit) (sp-0023) instructions and DAB
staining.



Blank control(blue):MCF 7 Cells(fixed with 2%
paraformaldehyde (10 min) and then
permeabilized with ice-cold 90% methanol for
30 min on ice). Primary Antibody: Rabbit Anti-
CD168/AF647 Conjugated antibody (bs-4736R-
AF647), Dilution: 5µg in 100 µL 1X PBS containing
0.5% BSA; Isotype Control Antibody: Rabbit
IgG/AF647(orange) ,used under the same
conditions.