

---

## mouse CD25 Rat mAb

Catalog Number: bsm-30157A

Target Protein: mouse CD25

Form: Liquid

Host: Rat

Clonality: Monoclonal

Clone No.: 4F8

Isotype: Rat IgG1,  $\lambda$

Applications: Flow-Cyt (1ug/Test)

Reactivity: Mouse

Predicted MW: 28 kDa

Detected MW: 55 kDa

Purification: affinity purified by Protein G

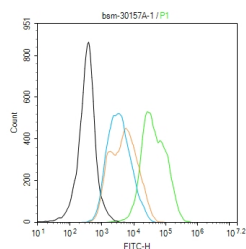
Storage: 0.01M TBS (pH7.4) with 1% BSA, 0.02% Proclin300 and 50% Glycerol.

Shipped at 4°C. Store at -20°C for one year. Avoid repeated freeze/thaw cycles.

**Background:** The interleukin 2 (IL2) receptor alpha (IL2RA) and beta (IL2RB) chains, together with the common gamma chain (IL2RG), constitute the high-affinity IL2 receptor. Homodimeric alpha chains (IL2RA) result in low-affinity receptor, while homodimeric beta (IL2RB) chains produce a medium-affinity receptor. Normally an integral-membrane protein, soluble IL2RA has been isolated and determined to result from extracellular proteolysis. Alternately-spliced IL2RA mRNAs have been isolated, but the significance of each is presently unknown. Mutations in this gene are associated with interleukin 2 receptor alpha deficiency. Patients with severe Coronavirus Disease 2019 (COVID-19), the disease caused by the novel severe acute respiratory syndrome coronavirus 2 (SARS-CoV-2), have significantly elevated levels of IL2R in their plasma. Similarly, serum IL-2R levels are found to be elevated in patients with different types of carcinomas. Certain IL2RA and IL2RB gene polymorphisms have been associated with lung cancer risk. [provided by RefSeq, Jul 2020]

### VALIDATION IMAGES

---



Blank control:ctl-2. Primary Antibody (green line): Rabbit Anti-mouse CD25 antibody (bsm-30157A) Dilution: 1ug/Test; Secondary Antibody (white blue line) : Goat anti-rat IgG-FITC Dilution: 0.5ug/Test. Isotype control (orange line) : Normal Rat IgG Protocol The cells were incubated in 5%BSA to block non-specific protein-protein interactions for 30 min at room temperature .Cells stained with Primary Antibody for 30 min at room temperature. The secondary antibody used for 40 min at room temperature. Acquisition of 20,000 events was performed.