

bsm-30156A**[Primary Antibody]****mouse CD19 Rat mAb****BioSS**
ANTIBODIES

www.bioss.com.cn

sales@bioss.com.cn

techsupport@bioss.com.cn

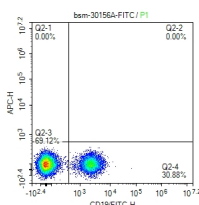
400-901-9800

— DATASHEET —**Host:** Rat**Isotype:** Rat IgG2a,k**Applications:** Flow-Cyt (1:50-100)**Clonality:** Monoclonal**CloneNo.:** 5C7**Reactivity:** Mouse**Target:** mouse CD19**Purification:** affinity purified by Protein G**Storage:** 0.01M TBS (pH7.4).

Shipped at 4°C. Store at -20°C for one year. Avoid repeated freeze/thaw cycles.

Predicted
MW.: 59 kDa

Background: This gene encodes a member of the immunoglobulin gene superfamily. Expression of this cell surface protein is restricted to B cell lymphocytes. This protein is a reliable marker for pre-B cells but its expression diminishes during terminal B cell differentiation in antibody secreting plasma cells. The protein has two N-terminal extracellular Ig-like domains separated by a non-Ig-like domain, a hydrophobic transmembrane domain, and a large C-terminal cytoplasmic domain. This protein forms a complex with several membrane proteins including complement receptor type 2 (CD21) and tetraspanin (CD81) and this complex reduces the threshold for antigen-initiated B cell activation. Activation of this B-cell antigen receptor complex activates the phosphatidylinositol 3-kinase signalling pathway and the subsequent release of intracellular stores of calcium ions. This protein is a target of chimeric antigen receptor (CAR) T-cells used in the treatment of lymphoblastic leukemia. Mutations in this gene are associated with the disease common variable immunodeficiency 3 (CVID3) which results in a failure of B-cell differentiation and impaired secretion of immunoglobulins. CVID3 is characterized by hypogammaglobulinemia, an inability to mount an antibody response to antigen, and recurrent bacterial infections. Alternative splicing results in multiple transcript variants encoding distinct isoforms. [provided by RefSeq, Jul 2020]

Subcellular
Location: Cell membrane**— VALIDATION IMAGES —**

scatter diagram showing mouse spleen cells stained with bsm-30156A. The cells were incubated with the antibody (bsm-30156A, 1 µg/Test) for 30 min at 22°C. The secondary antibody used for 40 min at room temperature. Acquisition of >20,000 events was performed.