

## STARD5 Rabbit pAb

Catalog Number: bs-3919R

Target Protein: STARD5

Concentration: 1mg/ml

Form: Liquid

Host: Rabbit

Clonality: Polyclonal

Isotype: IgG

Applications: WB (1:500-2000)

Reactivity: Human, Mouse (predicted:Rat, Pig, Dog, Horse)

Predicted MW: 23 kDa

Entrez Gene: 80765

Swiss Prot: Q9NSY2

Source: KLH conjugated synthetic peptide derived from human STARD5: 51-150/213.

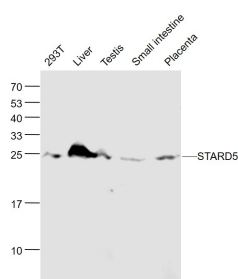
Purification: affinity purified by Protein A

Storage: 0.01M TBS (pH7.4) with 1% BSA, 0.02% Proclin300 and 50% Glycerol.

Shipped at 4°C. Store at -20°C for one year. Avoid repeated freeze/thaw cycles.

**Background:** STARD5, or START domain containing 5, belongs to a family containing a 200- to 210-amino acid STAR-related lipid transfer (START) domain. STARD5 may be involved in the intracellular transport of sterols or other lipids and may bind cholesterol or other sterols.

### VALIDATION IMAGES



Sample: 293T(Human) Cell Lysate at 30 ug Liver(Mouse) Lysate at 40 ug Testis(Mouse) Lysate at 40 ug Small intestine (Mouse) Lysate at 40 ug Placenta(Mouse) Lysate at 40 ug Primary: Anti- STARD5 (bs-3919R) at 1/1000 dilution Secondary: IRDye800CW Goat Anti-Rabbit IgG at 1/20000 dilution Predicted band size: 23 kD Observed band size: 23 kD