

bs-19492R**[Primary Antibody]****NT5DC3 Rabbit pAb****Bioss**
ANTIBODIES

www.bioss.com.cn

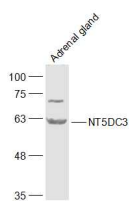
sales@bioss.com.cn

techsupport@bioss.com.cn

400-901-9800

— DATASHEET —

Host: Rabbit	Isotype: IgG	Applications: WB (1:500-2000)
Clonality: Polyclonal		Reactivity: Rat (predicted: Human, Mouse, Rabbit, Pig, GuineaPig, Horse)
GeneID: 51559	SWISS: Q86UY8	
Target: NT5DC3		Predicted MW.: 63 kDa
Immunogen: KLH conjugated synthetic peptide derived from human NT5DC3: 151-250/548.		Subcellular Location: Cytoplasm ,Nucleus
Purification: affinity purified by Protein A		
Concentration: 1mg/ml		
Storage: 0.01M TBS (pH7.4) with 1% BSA, 0.02% Proclin300 and 50% Glycerol. Shipped at 4°C. Store at -20°C for one year. Avoid repeated freeze/thaw cycles.		

— VALIDATION IMAGES —

Sample: Adrenal gland(Rat) Lysate at 40 ug
Primary: Anti-NT5DC3 (bs-19492R) at 1/1000
dilution Secondary: IRDye800CW Goat Anti-Rabbit IgG at 1/20000 dilution Predicted band size: 63 kD Observed band size: 62 kD

— SELECTED CITATIONS —

- **[IF=6.1]** Liao Fu-Jun. et al. Identification and experimental validation of KMO as a critical immune-associated mitochondrial gene in unstable atherosclerotic plaque. J TRANSL MED. 2024 Dec;22(1):1-20 IHC ;Human. 39026250