

bs-3995R**[Primary Antibody]****BioSS**
ANTIBODIES

www.bioss.com.cn

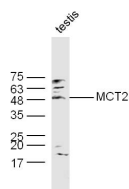
sales@bioss.com.cn

techsupport@bioss.com.cn

400-901-9800

MCT2 Rabbit pAb**DATASHEET**

Host: Rabbit	Isotype: IgG	Applications: WB (1:500-2000)
Clonality: Polyclonal		Reactivity: Mouse, Rat
GeneID: 9194	SWISS: O60669	
Target: MCT2		
Immunogen: KLH conjugated synthetic peptide derived from human SLC16A7: 401-478/478. < Cytoplasmic >		Predicted MW.: 52 kDa
Purification: affinity purified by Protein A		Subcellular Location: Cell membrane
Concentration: 1mg/ml		
Storage: 0.01M TBS (pH7.4) with 1% BSA, 0.02% Proclin300 and 50% Glycerol. Shipped at 4°C. Store at -20°C for one year. Avoid repeated freeze/thaw cycles.		
Background: Tissues with few or no mitochondria, such as erythrocytes and tumor cells, depend largely on glycolysis to generate ATP. The major end products of glycolysis, pyruvate and lactate, must be eliminated from these cells to enable continued glycolytic flux and prevent toxic effects. H ⁺ /monocarboxylate transporters (MCTs) mediate the transport of lactate and pyruvate. Human MCT2 has a high affinity for the transport of pyruvate (summary by Lin et al., 1998 [PubMed 9786900]).[supplied by OMIM, Feb 2011].		

VALIDATION IMAGES

Sample: Testis (Mouse) Lysate at 40 ug Primary:
Anti-MCT2 (bs-3995R) at 1/300 dilution
Secondary: IRDye800CW Goat Anti-Rabbit IgG at
1/20000 dilution Predicted band size: 52 kD
Observed band size: 52 kD

SELECTED CITATIONS

- **[IF=6.78]** P.P.M. Scariot. et al. Monocarboxylate transporters (MCTs) in skeletal muscle and hypothalamus of less or more physically active mice exposed to aerobic training. LIFE SCI. 2022 Oct;307:120872 WB ;Mouse. 35948119
- **[IF=5.923]** Abdelnaby Khalyfa. et al. Monocarboxylate Transporter-2 Expression Restricts Tumor Growth in a Murine Model of Lung Cancer: A Multi-Omic Analysis. Int J Mol Sci. 2021 Jan;22(19):10616 WB ;mouse. 34638954
- **[IF=5.332]** Harun-Or-Rashid M et al. MCT2 overexpression rescues metabolic vulnerability and protects retinal ganglion cells in two models of glaucoma. Neurobiol Dis. 2020 Jul;141:104944. Other ;Mouse. 32422282
- **[IF=3.8]** Hajka Daria. et al. Neuronal extracellular vesicles influence the expression, degradation and oligomeric state of fructose 1,6-bisphosphatase 2 in astrocytes affecting their glycolytic capacity. SCI REP-UK. 2024 Sep;14(1):1-16 IF ;Mouse. 39251668
- **[IF=3.8]** Alanis Coca. et al. Knocking down the neuronal lactate transporter MCT2 in the arcuate nucleus of female rats increases food intake and body weight. SCIENTIFIC REPORTS. 2025 Mar 3;15(1):7497. Western blot ;Rat. 40032881

Important Note: This product as supplied is intended for research use only, not for use in human, therapeutic or diagnostic applications.