

**bsm-33113M****[ Primary Antibody ]****IL2RA/CD25 Mouse mAb****BioSS**  
**ANTIBODIES**

www.bioss.com.cn

sales@bioss.com.cn

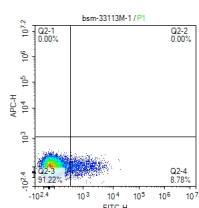
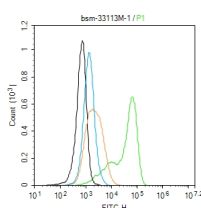
techsupport@bioss.com.cn

400-901-9800

**— DATASHEET —****Host:** Mouse**Isotype:** IgG2a, κ**Clonality:** Monoclonal**CloneNo.:** 2B2**GeneID:** 3559**Target:** IL2RA/CD25**Purification:** affinity purified by Protein G**Concentration:** 1mg/ml

**Storage:** Size : 50ul/100ul/200ul  
0.01M TBS (pH7.4) with 1% BSA, 0.02% Proclin300 and 50% Glycerol.  
Size : 200ug (PBS only)  
0.01M PBS  
Shipped at 4°C. Store at -20°C for one year. Avoid repeated freeze/thaw cycles.

**Background:** The interleukin 2 (IL2) receptor alpha (IL2RA) and beta (IL2RB) chains, together with the common gamma chain (IL2RG), constitute the high-affinity IL2 receptor. Homodimeric alpha chains (IL2RA) result in low-affinity receptor, while homodimeric beta (IL2RB) chains produce a medium-affinity receptor. Normally an integral-membrane protein, soluble IL2RA has been isolated and determined to result from extracellular proteolysis. Alternately-spliced IL2RA mRNAs have been isolated, but the significance of each is presently unknown. Mutations in this gene are associated with interleukin 2 receptor alpha deficiency. Patients with severe Coronavirus Disease 2019 (COVID-19), the disease caused by the novel severe acute respiratory syndrome coronavirus 2 (SARS-CoV-2), have significantly elevated levels of IL2R in their plasma. Similarly, serum IL-2R levels are found to be elevated in patients with different types of carcinomas. Certain IL2RA and IL2RB gene polymorphisms have been associated with lung cancer risk. [provided by RefSeq, Jul 2020]

**Applications:** Flow-Cyt (1ug/Test)**Reactivity:** Human**Predicted MW.:** 28 kDa**Subcellular Location:** Cell membrane**— VALIDATION IMAGES —**

Blank control:SR. Primary Antibody (green line): Mouse Anti-CD25 antibody (bsm-33113M)  
Dilution: 1ug/Test; Secondary Antibody (white blue line) : Goat anti-mouse IgG-FITC Dilution: 0.5ug/Test. Isotype control (orange line) : Normal Mouse IgG Protocol The cells were incubated in 5%BSA to block non-specific protein-protein interactions for 30 min at room temperature. Cells stained with Primary Antibody for 30 min at room temperature. The secondary antibody used for 40 min at room temperature. Acquisition of 20,000 events was performed.

scatter diagram showing peripheral blood lymphocytes stained with CD25. The cells were incubated with the antibody (bsm-33113M) for 30 min at 22°C. The secondary antibody used for 40 min at room temperature. Acquisition of >10,000 events was performed.