
HSP90 beta Mouse mAb

Catalog Number: bsm-33136M

Target Protein: HSP90 beta

Concentration: 1mg/ml

Form: Size : 50ul/100ul/200ul

Liquid

Size : 200ug (PBS only)

Lyophilized

Note: Centrifuge tubes before opening. Reconstitute the lyophilized product in distilled water. Optimal concentration should be determined by the end user.

Host: Mouse

Clonality: Monoclonal

Clone No.: 2A2

Isotype: IgG

Applications: WB (1:500-1000)

Reactivity: Human, Mouse, Rat

Predicted MW: 84 kDa

Entrez Gene: 3326

Swiss Prot: P08238

Purification: affinity purified by Protein G

Storage: Size : 50ul/100ul/200ul

0.01M TBS (pH7.4) with 1% BSA, 0.02% Proclin300 and 50% Glycerol.

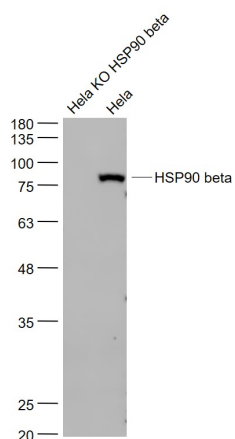
Size : 200ug (PBS only)

0.01M PBS

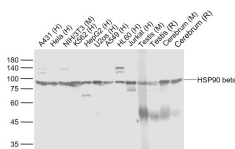
Shipped at 4°C. Store at -20°C for one year. Avoid repeated freeze/thaw cycles.

Background: This gene encodes a member of the heat shock protein 90 family; these proteins are involved in signal transduction, protein folding and degradation and morphological evolution. This gene encodes the constitutive form of the cytosolic 90 kDa heat-shock protein and is thought to play a role in gastric apoptosis and inflammation. Alternative splicing results in multiple transcript variants. Pseudogenes have been identified on multiple chromosomes. [provided by RefSeq, Dec 2012].

VALIDATION IMAGES



Sample: HeLa KO HSP90 beta(Human) Cell Lysate at 30 ug HeLa(Human) Cell Lysate at 30 ug Primary: Anti-HSP90 beta (bsm-33136M) at 1/1000 dilution Secondary: IRDye800CW Goat Anti-Mouse t 1/20000 dilution Predicted band size: 84 kD Observed band size: 84 kD



Sample: Lane 1: A431 (Human) Cell Lysate at 30 ug Lane 2: HeLa (Human) Cell Lysate at 30 ug Lane 3: NIH/3T3 (Mouse) Cell Lysate at 30 ug Lane 4: K562 (Human) Cell Lysate at 30 ug Lane 5: HepG2 (Human) Cell Lysate at 30 ug Lane 6: U2os (Human) Cell Lysate at 30 ug Lane 7: A549 (Human) Cell Lysate at 30 ug Lane 8: HL60 (Human) Cell Lysate at 30 ug Lane 9: Jurkat (Human) Cell Lysate at 30 ug Lane 10: Testis (Mouse) Lysate at 40 ug Lane 11: Testis (Rat) Lysate at 40 ug Lane 12: Cerebrum (Mouse) Lysate at 40 ug Lane 13: Cerebrum (Rat) Lysate at 40 ug Primary: Anti-HSP90 beta (bsm-33136M) at 1/1000 dilution Secondary: IRDye800CW Goat Anti-Mouse IgG at 1/20000 dilution Predicted band size: 90 kD Observed band size: 86 kD