

bsm-52195R**[Primary Antibody]****BioSS**
ANTIBODIES

www.bioss.com.cn

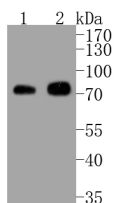
sales@bioss.com.cn

techsupport@bioss.com.cn

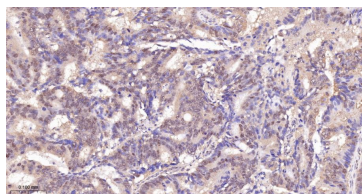
400-901-9800

phospho-RAF1 (Ser43) Recombinant Rabbit mAb**— DATASHEET —**

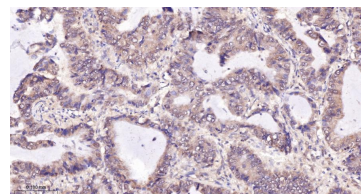
Host: Rabbit	Isotype: IgG	Applications: WB (1:500-2000) IHC-P (1:50-200) IHC-F (1:50-200) IF (1:50-200) Reactivity: Human, Mouse, Rat Predicted MW.: 71 kDa Subcellular Location: Cell membrane ,Cytoplasm ,Nucleus
Clonality: Recombinant	CloneNo.: 4G2	
GeneID: 5894	SWISS: P04049	
Target: RAF1 (Ser43)		
Immunogen: KLH conjugated Synthesised phosphopeptide derived from human RAF1 around the phosphorylation site of Ser43: RA(p-S)DD.		
Purification: affinity purified by Protein A		
Concentration: 1mg/ml		
Storage: 0.01M TBS (pH7.4) with 1% BSA, 0.02% Proclin300 and 50% Glycerol. Shipped at 4°C. Store at -20°C for one year. Avoid repeated freeze/thaw cycles.		
Background: The Raf family of serine/threonine specific kinases is comprised of three members (aRaf, bRaf, and cRaf) that play a critical role in regulating cell growth and differentiation, and couple growth factor receptor stimulation to nuclear transcription factors via the Ras/mitogen activated protein kinase (MAPK) pathway. cRaf kinase (also known as Raf1) is a small GTPase like kinase of 73 kDa, and is a signal transducer of multiple extracellular stimuli that is regulated by several pathways, and that once activated, phosphorylates MEK which in turn phosphorylates ERK. Raf1 is involved in the transduction of mitogenic signals from the cell membrane to the nucleus. It is part of the Ras dependent signaling pathway from receptors to the nucleus.		

— VALIDATION IMAGES —

Sample: Lane 1: NIH/3T3 cell lysate Lane 2: 293T cell lysate
 Primary: Anti-Phospho-Raf1 (Ser43) (bsm-52195R) at 1/500 dilution
 Secondary: Goat Anti-Rabbit IgG - HRP at 1:5000 dilution
 Predicted band size: 71 kD
 Observed band size: 71 kD



Paraformaldehyde-fixed, paraffin embedded Human Colon Cancer; Antigen retrieval by boiling in sodium citrate buffer (pH6.0) for 15 min; The section was incubated with Phospho-RAF1 (Ser43) Monoclonal Antibody, Unconjugated (bsm-52195R) at 1:200 overnight at 4°C, followed by conjugation to the bs-0295G-HRP and DAB (C-0010) staining.



Paraformaldehyde-fixed, paraffin embedded Human Lung Cancer; Antigen retrieval by boiling in sodium citrate buffer (pH6.0) for 15 min; The section was incubated with Phospho-RAF1 (Ser43) Monoclonal Antibody, Unconjugated (bsm-52195R) at 1:200 overnight at 4°C, followed by conjugation to the bs-0295G-HRP and DAB (C-0010) staining.

— SELECTED CITATIONS —

- **[IF=4.039]** Wen-Bo Zhang. et al. Down-regulating of MFN2 promotes vascular calcification via regulating RAS-RAF-ERK1/2 pathway. INT J CARDIOL. 2022 Jun;; WB ;Mouse. 35716948