

## phospho-RhoGDI (Ser174) Rabbit pAb

Catalog Number: bs-19875R

Target Protein: phospho-RhoGDI (Ser174)

Concentration: 1mg/ml

Form: Liquid

Host: Rabbit

Clonality: Polyclonal

Isotype: IgG

Applications: WB (1:500-2000)

Reactivity: Human (predicted:Cow)

Predicted MW: 23 kDa

Entrez Gene: 396

Swiss Prot: P52565

Source: KLH conjugated synthesised phosphopeptide derived from human RhoGDI around the phosphorylation site of Ser174: RG(p-S)YS.

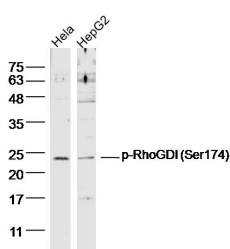
Purification: affinity purified by Protein A

Storage: 0.01M TBS (pH7.4) with 1% BSA, 0.02% Proclin300 and 50% Glycerol.

Shipped at 4°C. Store at -20°C for one year. Avoid repeated freeze/thaw cycles.

**Background:** This gene encodes a protein that plays a key role in the regulation of signaling through Rho GTPases. The encoded protein inhibits the disassociation of Rho family members from GDP (guanine diphosphate), thereby maintaining these factors in an inactive state. Activity of this protein is important in a variety of cellular processes, and expression of this gene may be altered in tumors. Mutations in this gene have been found in individuals with nephrotic syndrome, type 8. Alternate splicing results in multiple transcript variants. [provided by RefSeq, Jul 2014]

### VALIDATION IMAGES



Sample: HeLa Cell (Human) Lysate at 40 ug HepG2 Cell (Human) Lysate at 40 ug Primary: Anti- phospho-RhoGDI (Ser174) (bs-19875R) at 1/300 dilution Secondary: IRDye800CW Goat Anti-Rabbit IgG at 1/20000 dilution Predicted band size: 23 kD Observed band size: 23 kD