

bs-19870R**[Primary Antibody]****Rho guanine exchange factor 16 Rabbit pAb****BioSS**
ANTIBODIES

www.bioss.com.cn

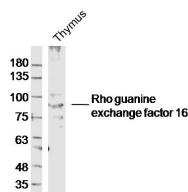
sales@bioss.com.cn

techsupport@bioss.com.cn

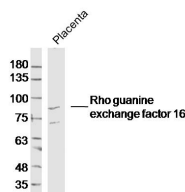
400-901-9800

— DATASHEET —

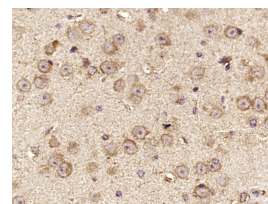
Host: Rabbit	Isotype: IgG	Applications: WB (1:500-2000) IHC-P (1:100-500) IHC-F (1:100-500) IF (1:100-500) Reactivity: Mouse (predicted: Human, Horse) Predicted MW.: 80 kDa Subcellular Location: Cytoplasm
Clonality: Polyclonal		
GeneID: 27237	SWISS: Q5VV41	
Target: Rho guanine exchange factor 16		
Immunogen: KLH conjugated synthetic peptide derived from human RHEBL1: 151-250/709.		
Purification: affinity purified by Protein A		
Concentration: 1mg/ml		
Storage: 0.01M TBS (pH7.4) with 1% BSA, 0.02% Proclin300 and 50% Glycerol. Shipped at 4°C. Store at -20°C for one year. Avoid repeated freeze/thaw cycles.		
Background: Although the specific function of this protein is not known yet, it is thought to be involved in protein-protein and protein-lipid interactions. [provided by RefSeq, Jul 2008]		

— VALIDATION IMAGES —

Sample:Thymus (Mouse) Lysate at 40 ug
Primary: Anti-Rho guanine exchange factor 16(bs-19870R)at 1/300 dilution Secondary: IRDye800CW Goat Anti-Rabbit IgG at 1/20000 dilution Predicted band size: 80kD Observed band size: 80kD



Sample:Placenta (Mouse) Lysate at 40 ug
Primary: Anti-Rho guanine exchange factor 16(bs-19870R)at 1/300 dilution Secondary: IRDye800CW Goat Anti-Rabbit IgG at 1/20000 dilution Predicted band size: 80kD Observed band size: 80kD



Paraformaldehyde-fixed, paraffin embedded (Mouse brain); Antigen retrieval by boiling in sodium citrate buffer (pH6.0) for 15min; Block endogenous peroxidase by 3% hydrogen peroxide for 20 minutes; Blocking buffer (normal goat serum) at 37°C for 30min; Antibody incubation with (Rho guanine exchange factor 16) Polyclonal Antibody, Unconjugated (bs-19870R) at 1:400 overnight at 4°C, followed by operating according to SP Kit(Rabbit) (sp-0023) instructions and DAB staining.