

bs-19863R**[Primary Antibody]****RGS7 Rabbit pAb****BioSS**
ANTIBODIES

www.bioss.com.cn

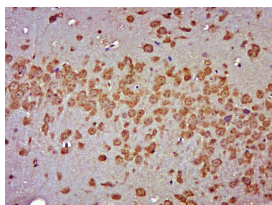
sales@bioss.com.cn

techsupport@bioss.com.cn

400-901-9800

— DATASHEET —

Host: Rabbit	Isotype: IgG	Applications: IHC-P (1:100-500)
Clonality: Polyclonal		IHC-F (1:100-500)
GeneID: 6000	SWISS: P49802	IF (1:100-500)
Target: RGS7		
Immunogen: KLH conjugated synthetic peptide derived from human RGS7: 221-320/495.		
Purification: affinity purified by Protein A		Reactivity: Mouse (predicted: Human, Rat, Rabbit, Sheep, Cow, Zebrafish, Chicken, Dog, Horse)
Concentration: 1mg/ml		
Storage: 0.01M TBS (pH7.4) with 1% BSA, 0.02% Proclin300 and 50% Glycerol. Shipped at 4°C. Store at -20°C for one year. Avoid repeated freeze/thaw cycles.		Predicted MW.: 58 kDa
Background: RGS7 inhibits signal transduction by increasing the GTPase activity of G protein alpha subunits thereby driving them into their inactive GDP bound form. Activity on G(o) alpha is specifically enhanced by the RGS6/GNG5 dimer. RGS7 may play a role in synaptic vesicle exocytosis and may play an important role in the rapid regulation of neuronal excitability and the cellular responses to short lived stimulations.		Subcellular Location: Cytoplasm ,Nucleus

— VALIDATION IMAGES —

Paraformaldehyde-fixed, paraffin embedded (Mouse brain); Antigen retrieval by boiling in sodium citrate buffer (pH6.0) for 15min; Block endogenous peroxidase by 3% hydrogen peroxide for 20 minutes; Blocking buffer (normal goat serum) at 37°C for 30min; Antibody incubation with (RGS7) Polyclonal Antibody, Unconjugated (bs-19863R) at 1:500 overnight at 4°C, followed by a conjugated secondary (sp-0023) for 20 minutes and DAB staining.