

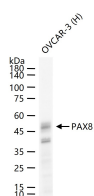
**bsm-52737R****[ Primary Antibody ]****BioSS**  
**ANTIBODIES**

www.bioss.com.cn

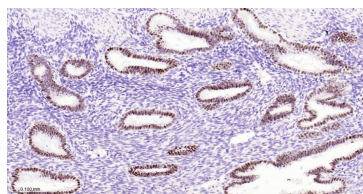
sales@bioss.com.cn

techsupport@bioss.com.cn

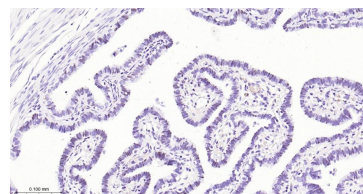
400-901-9800

**PAX8 Recombinant Rabbit mAb****— DATASHEET —****Host:** Rabbit**Isotype:** IgG**Clonality:** Recombinant**GeneID:** 7849**SWISS:** Q06710**Target:** PAX8**Immunogen:** A synthesized peptide derived from human PAX8: 300-450/450.**Purification:** affinity purified by Protein A**Concentration:** 1mg/ml**Storage:** 0.01M TBS (pH7.4) with 1% BSA, 0.02% Proclin300 and 50% Glycerol.  
Shipped at 4°C. Store at -20°C for one year. Avoid repeated freeze/thaw cycles.**Background:** This protein is a member of the paired box (PAX) family of transcription factors, typically containing a paired box domain, an octapeptide, and a paired-type homeodomain. This family plays critical roles during fetal development and cancer growth. The specific function of the PAX8 is unknown but it may involve kidney cell differentiation, thyroid development, or thyroid dysgenesis. Alternative splicing in the gene by inclusion or exclusion of exons 7 and/or 8 has produced several known products but the biological significance of the variants is unknown. Several other splice variants have been proposed but the full nature of these products has not been described. Pax8 is also a marker of otic progenitor cells.**Applications:** **WB** (1:500-2000)  
**IHC-P** (1:100-500)  
**IHC-F** (1:100-500)  
**IF** (1:100-500)  
**ICC/IF** (1:50-200)**Reactivity:** Human, Mouse, Rat**Predicted MW.:** 48 kDa**Subcellular Location:** Nucleus**— VALIDATION IMAGES —**

25 ug total protein per lane of various lysates (see on figure) probed with PAX8 monoclonal antibody, unconjugated (bsm-52737R) at 1:1000 dilution and 4°C overnight incubation. Followed by conjugated secondary antibody incubation at r.t. for 60 min.



Paraformaldehyde-fixed, paraffin embedded Human uterus; Antigen retrieval by boiling in sodium citrate buffer (pH6.0) for 15 min; Antibody incubation with PAX8 Monoclonal Antibody, Unconjugated (bsm-52737R) at 1:200 overnight at 4°C, followed by conjugation to the bs-0295G-HRP and DAB (C-0010) staining.



Paraformaldehyde-fixed, paraffin embedded Human fallopian tube; Antigen retrieval by boiling in sodium citrate buffer (pH6.0) for 15 min; Antibody incubation with PAX8 Monoclonal Antibody, Unconjugated (bsm-52737R) at 1:200 overnight at 4°C, followed by conjugation to the bs-0295G-HRP and DAB (C-0010) staining.