

**bs-19484R****[ Primary Antibody ]****NSUN6 Rabbit pAb****Bioss**  
**ANTIBODIES**

www.bioss.com.cn

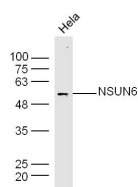
sales@bioss.com.cn

techsupport@bioss.com.cn

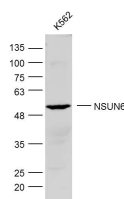
400-901-9800

**— DATASHEET —**

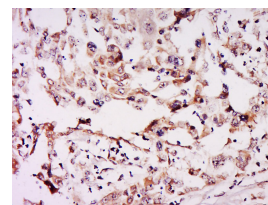
<b>Host:</b> Rabbit	<b>Isotype:</b> IgG	<b>Applications:</b> <b>WB</b> (1:500-2000) <b>IHC-P</b> (1:100-500) <b>IHC-F</b> (1:100-500) <b>IF</b> (1:100-500)  <b>Reactivity:</b> Human  <b>Predicted MW.:</b> 52 kDa  <b>Subcellular Location:</b> Nucleus
<b>Clonality:</b> Polyclonal		
<b>GeneID:</b> 221078	<b>SWISS:</b> Q8TEA1	
<b>Target:</b> NSUN6		
<b>Immunogen:</b> KLH conjugated synthetic peptide derived from human NSUN6: 51-150/469.		
<b>Purification:</b> affinity purified by Protein A		
<b>Concentration:</b> 1mg/ml		
<b>Storage:</b> 0.01M TBS (pH7.4) with 1% BSA, 0.02% Proclin300 and 50% Glycerol. Shipped at 4°C. Store at -20°C for one year. Avoid repeated freeze/thaw cycles.		

**— VALIDATION IMAGES —**

Sample: HeLa (human) Cell Lysate at 40 ug  
Primary: Anti-NSUN6(bs-19484R) at 1/300  
dilution Secondary: IRDye800CW Goat Anti-Rabbit IgG at 1/20000 dilution Predicted band size: 52 kD Observed band size: 52 kD



Sample: K562 Cell (Human) Lysate at 30 ug  
Primary: Anti- NSUN6 (bs-19484R) at 1/300  
dilution Secondary: IRDye800CW Goat Anti-Rabbit IgG at 1/20000 dilution Predicted band size: 52 kD Observed band size: 52 kD



Tissue/cell: human breast cancer; 4% Paraformaldehyde-fixed and paraffin-embedded; Antigen retrieval: citrate buffer (0.01M, pH 6.0 ), Boiling bathing for 15min; Block endogenous peroxidase by 3% Hydrogen peroxide for 30min; Blocking buffer (normal goat serum, C-0005) at 37°C for 20 min; Incubation: Anti-NSUN6 Polyclonal Antibody, Unconjugated(bs-19484R) 1:500, overnight at 4°C, followed by conjugation to the secondary antibody(SP-0023) and DAB(C-0010) staining

**— SELECTED CITATIONS —**

- **[IF=3.6]** Yuanbo Cui. et al. NSUN6 mediates 5-methylcytosine modification of METTL3 and promotes colon adenocarcinoma progression. J BIOCHEM MOL TOXIC. 2024 May;38(6):e23749 WB ;Human. 38800929