

Phospho-Paxillin (Tyr118) Rabbit pAb

Catalog Number: bs-3352R

Target Protein: Phospho-Paxillin (Tyr118)

Concentration: 1mg/ml

Form: Liquid

Host: Rabbit

Clonality: Polyclonal

Isotype: IgG

Applications: WB (1:500-2000)

Reactivity: Human, Mouse (predicted:Rat, Rabbit, Cow, Chicken, Dog, Horse)

Predicted MW: 68 kDa

Entrez Gene: 5829

Swiss Prot: P49023

Source: KLH conjugated Synthesised phosphopeptide derived from human Paxillin around the phosphorylation site of Tyr118: HV(p-Y)SF.

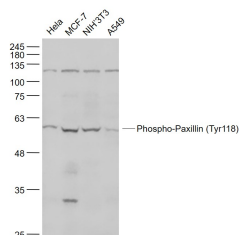
Purification: affinity purified by Protein A

Storage: 0.01M TBS (pH7.4) with 1% BSA, 0.02% Proclin300 and 50% Glycerol.

Shipped at 4°C. Store at -20°C for one year. Avoid repeated freeze/thaw cycles.

Background: Paxillin is a 64 kDa cytoskeletal adapter protein involved in organisation and function of focal adhesions, which are critical to cell adhesion and migration. This in turn plays a role in a wide variety of processes including embryogenesis, organogenesis, wound repair, inflammation and cancer. Paxillin contains LD motifs, LIM domains, SH3 and SH2 binding domains that serve as docking sites for cytoskeletal proteins, tyrosine kinases (e.g., FAK, Pyk 2, Src), serine/threonine kinases, GTPase activating proteins and other adaptor proteins (e.g., Actin, Vinculin, Crk).

VALIDATION IMAGES



Sample: HeLa(Human) Cell Lysate at 30 ug MCF-7(Human) Cell Lysate at 30 ug NIH/3T3(Mouse) Cell Lysate at 30 ug A549(Human) Cell Lysate at 30 ug Primary: Anti- Phospho-Paxillin (Tyr118) (bs-3352R) at 1/500 dilution Secondary: IRDye800CW Goat Anti-Rabbit IgG at 1/20000 dilution Predicted band size: 68 kD Observed band size: 60 kD