

bs-9410R**[Primary Antibody]****TSPAN1 Rabbit pAb****BioSS**
ANTIBODIES

www.bioss.com.cn

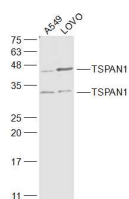
sales@bioss.com.cn

techsupport@bioss.com.cn

400-901-9800

— DATASHEET —

Host: Rabbit	Isotype: IgG	Applications: WB (1:500-2000)
Clonality: Polyclonal		
GeneID: 10103	SWISS: O60635	
Target: TSPAN1		
Immunogen: KLH conjugated synthetic peptide derived from human TSPAN1: 151-241/241.		
Purification: affinity purified by Protein A		Reactivity: Human
Concentration: 1mg/ml		
Storage: 0.01M TBS (pH7.4) with 1% BSA, 0.02% Proclin300 and 50% Glycerol. Shipped at 4°C. Store at -20°C for one year. Avoid repeated freeze/thaw cycles.		Predicted MW.: 26 kDa
Background: The protein encoded by this gene is a member of the transmembrane 4 superfamily, also known as the tetraspanin family. Most of these members are cell-surface proteins that are characterized by the presence of four hydrophobic domains. The proteins mediate signal transduction events that play a role in the regulation of cell development, activation, growth and motility.		Subcellular Location: Cell membrane ,Cytoplasm

— VALIDATION IMAGES —

Sample: A549(Human) Cell Lysate at 30 ug
LOVO(Human) Cell Lysate at 30 ug Primary: Anti-TSPAN1 (bs-9410R) at 1/1000 dilution
Secondary: IRDye800CW Goat Anti-Rabbit IgG at 1/20000 dilution Predicted band size: 26 kD
Observed band size: 31/46 kD