

bs-3548R**[Primary Antibody]****BioSS**
ANTIBODIES

www.bioss.com.cn

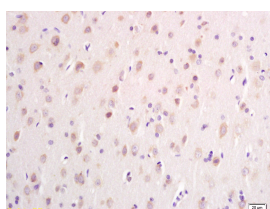
sales@bioss.com.cn

techsupport@bioss.com.cn

400-901-9800

DTNB Rabbit pAb**— DATASHEET —**

Host: Rabbit	Isotype: IgG	Applications: IHC-P (1:100-500)
Clonality: Polyclonal		IHC-F (1:100-500)
GeneID: 1838	SWISS: O60941	IF (1:100-500)
Target: DTNB		Reactivity: Rat (predicted: Human, Mouse, Rabbit, Cow, Chicken, Dog, Horse)
Immunogen: KLH conjugated synthetic peptide derived from human DTNB: 261-370/627.		Predicted MW.: 71 kDa
Purification: affinity purified by Protein A		Subcellular Location: Cytoplasm
Concentration: 1mg/ml		
Storage: 0.01M TBS (pH7.4) with 1% BSA, 0.02% Proclin300 and 50% Glycerol. Shipped at 4°C. Store at -20°C for one year. Avoid repeated freeze/thaw cycles.		
Background: Dystrobrevin beta is a component of the dystrophin-associated protein complex and interacts with dystrophin short form DP71, syntrophins SNTG1 and SNTG2. It localizes to the sarcolemma and its disruption is associated with various forms of muscular dystrophy. 4 isoforms produced by alternative splicing have been identified.		

— VALIDATION IMAGES —

Tissue/cell: rat brain tissue; 4% Paraformaldehyde-fixed and paraffin-embedded; Antigen retrieval: citrate buffer (0.01M, pH 6.0), Boiling bathing for 15min; Block endogenous peroxidase by 3% Hydrogen peroxide for 30min; Blocking buffer (normal goat serum, C-0005) at 37°C for 20 min; Incubation: Anti-DTNB Polyclonal Antibody, Unconjugated(bs-3548R) 1:200, overnight at 4°C, followed by conjugation to the secondary antibody(SP-0023) and DAB(C-0010) staining