

**bs-3461R****[ Primary Antibody ]****phospho-PPIG (Ser376) Rabbit pAb****Bioss**  
**ANTIBODIES**

www.bioss.com.cn

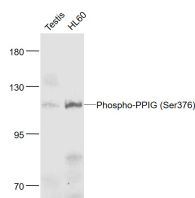
sales@bioss.com.cn

techsupport@bioss.com.cn

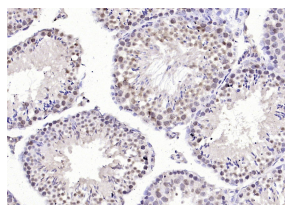
400-901-9800

**— DATASHEET —**

<b>Host:</b> Rabbit	<b>Isotype:</b> IgG	<b>Applications:</b> <b>WB</b> (1:500-2000) <b>IHC-P</b> (1:100-500) <b>IHC-F</b> (1:100-500) <b>IF</b> (1:100-500)  <b>Reactivity:</b> Human, Mouse (predicted: Rat, Pig, Sheep, Cow, Chicken, Dog, Horse)  <b>Predicted MW.:</b> 89 kDa  <b>Subcellular Location:</b> Nucleus
<b>Clonality:</b> Polyclonal		
<b>GeneID:</b> 9360	<b>SWISS:</b> Q13427	
<b>Target:</b> PPIG (Ser376)		
<b>Immunogen:</b> KLH conjugated Synthesised phosphopeptide derived from human PPIG around the phosphorylation site of Ser376: VS(p-S)GE.		
<b>Purification:</b> affinity purified by Protein A		
<b>Concentration:</b> 1mg/ml		
<b>Storage:</b> 0.01M TBS (pH7.4) with 1% BSA, 0.02% Proclin300 and 50% Glycerol. Shipped at 4°C. Store at -20°C for one year. Avoid repeated freeze/thaw cycles.		
<b>Background:</b> PPIG belongs to the the peptidyl-prolyl cis/trans isomerase protein family (PPIases). PPIases accelerate the folding of proteins. PPIG catalyzes the cis-trans isomerization of proline imidic peptide bonds in oligopeptides and is implicated in the folding, transport, and assembly of proteins. It is distributed in nuclear speckles, a nuclear compartment rich in splicing factors, and colocalizes with the splicing factors SC35 and pinin, suggesting a role in the regulation of pre-mRNA splicing.		

**— VALIDATION IMAGES —**

Sample: Testis (Mouse) Lysate at 40 ug  
HL60(Human) Cell Lysate at 30 ug  
Primary: Anti-Phospho-PPIG (Ser376) (bs-3461R) at 1/1000  
dilution  
Secondary: IRDye800CW Goat Anti-Rabbit IgG at 1/20000 dilution  
Predicted band size: 89 kD  
Observed band size: 110 kD



Paraformaldehyde-fixed, paraffin embedded (mouse testis tissue); Antigen retrieval by boiling in sodium citrate buffer (pH6.0) for 15min; Block endogenous peroxidase by 3% hydrogen peroxide for 20 minutes; Blocking buffer (normal goat serum) at 37°C for 30min; Antibody incubation with (PPIG (Ser376)) Polyclonal Antibody, Unconjugated (bs-3461R) at 1:400 overnight at 4°C, followed by operating according to SP Kit(Rabbit) (sp-0023) instructions and DAB staining.