

**bs-3536R****[ Primary Antibody ]****PPIG Rabbit pAb****Bioss**  
ANTIBODIES

www.bioss.com.cn

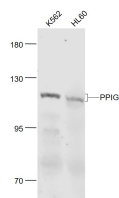
sales@bioss.com.cn

techsupport@bioss.com.cn

400-901-9800

**— DATASHEET —**

<b>Host:</b> Rabbit	<b>Isotype:</b> IgG	<b>Applications:</b> WB (1:500-2000)
<b>Clonality:</b> Polyclonal		<b>Reactivity:</b> Human (predicted: Mouse, Rat, Rabbit, Pig, Cow, Dog, Horse)
<b>GeneID:</b> 9360	<b>SWISS:</b> Q13427	
<b>Target:</b> PPIG		<b>Predicted MW.:</b> 89 kDa
<b>Immunogen:</b> KLH conjugated synthetic peptide derived from human PPIG: 351-450/754.		<b>Subcellular Location:</b> Nucleus
<b>Purification:</b> affinity purified by Protein A		
<b>Concentration:</b> 1mg/ml		
<b>Storage:</b> 0.01M TBS (pH7.4) with 1% BSA, 0.02% Proclin300 and 50% Glycerol. Shipped at 4°C. Store at -20°C for one year. Avoid repeated freeze/thaw cycles.		
<b>Background:</b> PPIG belongs to the the peptidyl-prolyl cis/trans isomerase protein family (PPIases). PPIases accelerate the folding of proteins. PPIG catalyzes the cis-trans isomerization of proline imidic peptide bonds in oligopeptides and is implicated in the folding, transport, and assembly of proteins. It is distributed in nuclear speckles, a nuclear compartment rich in splicing factors, and colocalizes with the splicing factors SC35 and pinin, suggesting a role in the regulation of pre-mRNA splicing.		

**— VALIDATION IMAGES —**

Sample: K562 (Human) Cell Lysate at 30 ug  
(Human) Cell Lysate at 30 ug Primary: Anti- PPIG (bs-3536R) at 1/1000 dilution Secondary: IRDye800CW Goat Anti-Rabbit IgG at 1/20000 dilution Predicted band size: 110 kD Observed band size: 110 kD