

bs-14509R

[Primary Antibody]

EFCAB2 Rabbit pAb

BioSS
ANTIBODIES

www.bioss.com.cn

sales@bioss.com.cn

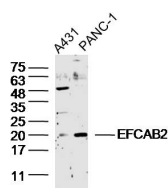
techsupport@bioss.com.cn

400-901-9800

— DATASHEET —

Host: Rabbit	Isotype: IgG	Applications: WB (1:500-2000)
Clonality: Polyclonal		Reactivity: Human
GeneID: 84288	SWISS: Q5VUJ9	
Target: EFCAB2		
Immunogen: KLH conjugated synthetic peptide derived from human EFCAB2: 51-150/269.		Predicted MW.: 30 kDa
Purification: affinity purified by Protein A		Subcellular Location: Cytoplasm
Concentration: 1mg/ml		
Storage: 0.01M TBS (pH7.4) with 1% BSA, 0.02% Proclin300 and 50% Glycerol. Shipped at 4°C. Store at -20°C for one year. Avoid repeated freeze/thaw cycles.		
Background: EFCAB2 contains two EF-hand domains. There are two known isoforms produced by alternative splicing.		

— VALIDATION IMAGES —



Sample: A431 Cell (Human) Lysate at 40 ug
PANC-1 Cell (Human) Lysate at 40 ug Primary:
Anti- EFCAB2 (bs-14509R) at 1/300 dilution
Secondary: IRDye800CW Goat Anti-Rabbit IgG at
1/20000 dilution Predicted band size: 30 kD
Observed band size: 20 kD