

bs-14357R**[Primary Antibody]**

DNA Primase Rabbit pAb

BioSS
ANTIBODIES

www.bioss.com.cn

sales@bioss.com.cn

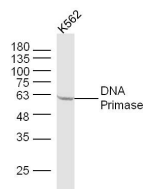
techsupport@bioss.com.cn

400-901-9800

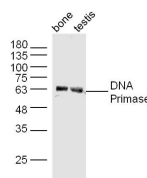
— DATASHEET —

| | | |
|--|----------------------|--|
| Host: Rabbit | Isotype: IgG | Applications: WB (1:500-2000) |
| Clonality: Polyclonal | | Reactivity: Human, Mouse (predicted: Rat, Pig) |
| GeneID: 5558 | SWISS: P49643 | |
| Target: DNA Primase | | Predicted MW.: 59 kDa |
| Immunogen: KLH conjugated synthetic peptide derived from human DNA Primase: 51-150/509. | | Subcellular Location: Nucleus |
| Purification: affinity purified by Protein A | | |
| Concentration: 1mg/ml | | |
| Storage: 0.01M TBS (pH7.4) with 1% BSA, 0.02% Proclin300 and 50% Glycerol. Shipped at 4°C. Store at -20°C for one year. Avoid repeated freeze/thaw cycles. | | |
| Background: This gene encodes the 58 kilodalton subunit of DNA primase, an enzyme that plays a key role in the replication of DNA. The encoded protein forms a heterodimer with a 49 kilodalton subunit. This heterodimer functions as a DNA-directed RNA polymerase to synthesize small RNA primers that are used to create Okazaki fragments on the lagging strand of the DNA. [provided by RefSeq, Sep 2013] | | |

— VALIDATION IMAGES —



Protein: K562(human) lysates at 30ug; Primary: rabbit Anti-DNA primase (bs-14357R) at 1:300; Secondary: HRP conjugated Goat-Anti-rabbit IgG(bs-0295G-HRP) at 1: 5000; Predicted band size:60 kD Observed band size:60 kD



Sample: bone (mouse) Lysate at 40 ug testis (Mouse) Lysate at 40 ug Primary: Anti-DNA primase (bs-14357R) at 1/300 dilution Secondary: IRDye800CW Goat Anti-Rabbit IgG at 1/20000 dilution Predicted band size: 59 kD Observed band size: 63 kD

— SELECTED CITATIONS —

- **[IF=1.7]** Yin Jingyang, et al. Increased PRIM2 expression associated with poor-prognosis in patients with pancreatic ductal adenocarcinoma. PANCREAS. 2024 Sep;;10.1097/MPA.0000000000002387 IHC ;Human. 39259847