

bs-18676R**[Primary Antibody]****Marapsin1/CAPH2 Rabbit pAb****BioSS**
ANTIBODIES

www.bioss.com.cn

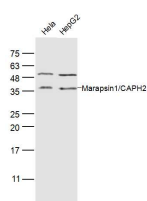
sales@bioss.com.cn

techsupport@bioss.com.cn

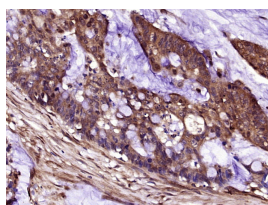
400-901-9800

— DATASHEET —

Host: Rabbit
Clonality: Polyclonal
GeneID: 83886
Target: Marapsin1/CAPH2
Immunogen: KLH conjugated synthetic peptide derived from human Marapsin1/CAPH2: 151-250/290.
Purification: affinity purified by Protein A
Concentration: 1mg/ml
Storage: 0.01M TBS (pH7.4) with 1% BSA, 0.02% Proclin300 and 50% Glycerol.
Shipped at 4°C. Store at -20°C for one year. Avoid repeated freeze/thaw cycles.
Background: Pancreatin is a pancreatic tryptic serine peptidase that cleaves peptides after an arginine residue.[supplied by OMIM, Sep 2003]

Isotype: IgG**SWISS:** Q9BQR3**Applications:** **WB** (1:500-2000)
IHC-P (1:100-500)
IHC-F (1:100-500)
IF (1:100-500)**Reactivity:** Human**Predicted MW.:** 28 kDa**Subcellular Location:** Secreted**— VALIDATION IMAGES —**

Sample: HeLa(Human) Cell Lysate at 40 ug
HepG2(Human) Cell Lysate at 40 ug
Primary: Anti-Marapsin1/CAPH2(bs-18676R) at 1/300
dilution Secondary: IRDye800CW Goat Anti-Rabbit IgG at 1/20000 dilution
Predicted band size: 28 kD Observed band size: 28 kD



Paraformaldehyde-fixed, paraffin embedded (human cervical carcinoma); Antigen retrieval by boiling in sodium citrate buffer (pH6.0) for 15min; Block endogenous peroxidase by 3% hydrogen peroxide for 20 minutes; Blocking buffer (normal goat serum) at 37°C for 30min; Antibody incubation with (CAPH2) Polyclonal Antibody, Unconjugated (bs-18676R) at 1:400 overnight at 4°C, followed by operating according to SP Kit(Rabbit) (sp-0023) instructions and DAB staining.