

**bs-18675R****[ Primary Antibody ]****MAPRE1 Rabbit pAb****BioSS**  
**ANTIBODIES**

www.bioss.com.cn

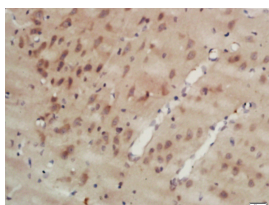
sales@bioss.com.cn

techsupport@bioss.com.cn

400-901-9800

**— DATASHEET —**

<b>Host:</b> Rabbit	<b>Isotype:</b> IgG	<b>Applications:</b> IHC-P (1:100-500) IHC-F (1:100-500) IF (1:100-500)  <b>Reactivity:</b> Rat (predicted: Human, Mouse, Cow, Chicken, Dog)  <b>Predicted MW.:</b> 36 kDa  <b>Subcellular Location:</b> Cytoplasm
<b>Clonality:</b> Polyclonal		
<b>GeneID:</b> 22919	<b>SWISS:</b> Q15691	
<b>Target:</b> MAPRE1		
<b>Immunogen:</b> KLH conjugated synthetic peptide derived from human MAPRE1: 2-100/268.		
<b>Purification:</b> affinity purified by Protein A		
<b>Concentration:</b> 1mg/ml		
<b>Storage:</b> 0.01M TBS (pH7.4) with 1% BSA, 0.02% Proclin300 and 50% Glycerol. Shipped at 4°C. Store at -20°C for one year. Avoid repeated freeze/thaw cycles.		
<b>Background:</b> The protein encoded by this gene was first identified by its binding to the APC protein which is often mutated in familial and sporadic forms of colorectal cancer. This protein localizes to microtubules, especially the growing ends, in interphase cells. During mitosis, the protein is associated with the centrosomes and spindle microtubules. The protein also associates with components of the dynactin complex and the intermediate chain of cytoplasmic dynein. Because of these associations, it is thought that this protein is involved in the regulation of microtubule structures and chromosome stability. This gene is a member of the RP/EB family. [provided by RefSeq, Jul 2008]		

**— VALIDATION IMAGES —**

Tissue/cell: rat brain tissue; 4%  
Paraformaldehyde-fixed and paraffin-  
embedded; Antigen retrieval: citrate buffer (  
0.01M, pH 6.0 ), Boiling bathing for 15min; Block  
endogenous peroxidase by 3% Hydrogen  
peroxide for 30min; Blocking buffer (normal goat  
serum,C-0005) at 37°C for 20 min; Incubation:  
Anti-MAPRE1 Polyclonal Antibody,  
Unconjugated(bs-18675R) 1:200, overnight at  
4°C, followed by conjugation to the secondary  
antibody(SP-0023) and DAB(C-0010) staining