

**bs-7996R****[ Primary Antibody ]****CEACAM21 Rabbit pAb****Bioss**  
**ANTIBODIES**

www.bioss.com.cn

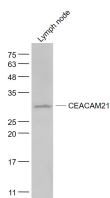
sales@bioss.com.cn

techsupport@bioss.com.cn

400-901-9800

**— DATASHEET —**

<b>Host:</b> Rabbit	<b>Isotype:</b> IgG	<b>Applications:</b> WB (1:500-2000)
<b>Clonality:</b> Polyclonal		<b>Reactivity:</b> Human, Mouse
<b>GeneID:</b> 90273	<b>SWISS:</b> Q3KPI0	
<b>Target:</b> CEACAM21		
<b>Immunogen:</b> KLH conjugated synthetic peptide derived from human CEACAM21: 201-293/293. < Extracellular >		<b>Predicted MW.:</b> 29 kDa
<b>Purification:</b> affinity purified by Protein A		<b>Subcellular Location:</b> Cell membrane
<b>Concentration:</b> 1mg/ml		
<b>Storage:</b> 0.01M TBS (pH7.4) with 1% BSA, 0.02% Proclin300 and 50% Glycerol. Shipped at 4°C. Store at -20°C for one year. Avoid repeated freeze/thaw cycles.		
<b>Background:</b> Carcinoembryonic antigen (CEA) is one of the most commonly used tumor markers in serum immunoassay determinations of carcinoma. Members of the CEACAM (carcinoembryonic antigen-related cell adhesion molecule) family contain a single N domain, with structural homology to the immunoglobulin variable domains, followed by a variable number of immunoglobulin constant-like A and/or B domains. CEACAM21 (carcinoembryonic antigen-related cell adhesion molecule 21) is a 293 amino acid single-pass type I membrane protein that belongs to the CEACAM family and contains one Ig-like C2-type domain. CEACAM21 exists as three alternatively spliced isoforms that are encoded by a gene which maps to human chromosome 19.		

**— VALIDATION IMAGES —**

Sample: Lymph node (Mouse) Lysate at 40 ug  
Primary: Anti- CEACAM21 (bs-7996R) at 1/1000  
dilution Secondary: IRDye800CW Goat Anti-  
Rabbit IgG at 1/20000 dilution Predicted band  
size: 29 kD Observed band size: 29 kD