

bs-11612R**[Primary Antibody]****BioSS**
ANTIBODIES

www.bioss.com.cn

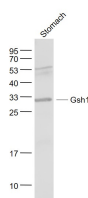
sales@bioss.com.cn

techsupport@bioss.com.cn

400-901-9800

Gsh1 Rabbit pAb**— DATASHEET —**

Host: Rabbit	Isotype: IgG	Applications: WB (1:500-2000)
Clonality: Polyclonal		Reactivity: Mouse (predicted: Human, Rat, Pig, Sheep, Dog)
GeneID: 219409	SWISS: Q9H4S2	
Target: Gsh1		Predicted MW.: 28 kDa
Immunogen: KLH conjugated synthetic peptide derived from human Gsh1: 165-264/264.		Subcellular Location: Nucleus
Purification: affinity purified by Protein A		
Concentration: 1mg/ml		
Storage: 0.01M TBS (pH7.4) with 1% BSA, 0.02% Proclin300 and 50% Glycerol. Shipped at 4°C. Store at -20°C for one year. Avoid repeated freeze/thaw cycles.		
Background: Growth hormone-releasing hormone (GHRH) stimulates secretion and synthesis of growth hormone (GH), causes somatotroph proliferation and may have direct actions in fetal/placental development, reproduction and immune function. It exerts its action through high-affinity GHRH receptors present in the anterior pituitary. GSH-1 (GS homeobox 1) is a 264 amino acid hypothalamic nuclear protein that functions as a transcription factor responsible for maintaining GHRH expression as well as playing an important role in pituitary development. Coexpression of CBP leads to significantly enhanced GSH-1-induced GHRH expression, which suggest that CBP may function as a co-activator. Knockdown of GSH-1 mRNA in mice causes a dwarf phenotype, which suggests that certain cases of familial dwarfism may be caused by a mutation of the GSH-1 gene.		

— VALIDATION IMAGES —

Sample: Stomach (Mouse) Lysate at 40 ug
Primary: Anti- Gsh1 (bs-11612R) at 1/1000
dilution Secondary: IRDye800CW Goat Anti-
Rabbit IgG at 1/20000 dilution Predicted band
size: 28 kD Observed band size: 30 kD

— SELECTED CITATIONS —

- **[IF=6.7]** Yi Ling, et al. Jinwu Jiangu capsule attenuates rheumatoid arthritis via the SLC7A11/GSH/GPX4 pathway in M1 macrophages. PHYTOMEDICINE. 2024 Dec;135:156232 WB ;Rat,Human. 39547097