

**bs-1495R****[ Primary Antibody ]****OCLN Rabbit pAb****BioSS**  
**ANTIBODIES**

www.bioss.com.cn

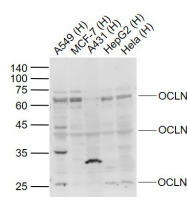
sales@bioss.com.cn

techsupport@bioss.com.cn

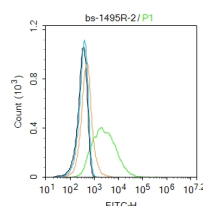
400-901-9800

**— DATASHEET —**

<b>Host:</b> Rabbit	<b>Isotype:</b> IgG	<b>Applications:</b> <b>WB</b> (1:500-2000) <b>Flow-Cyt</b> (2µg/Test)
<b>Clonality:</b> Polyclonal		
<b>GeneID:</b> 18260	<b>SWISS:</b> Q61146	<b>Reactivity:</b> Human (predicted: Mouse, Rat, Pig, Cow, Dog, GuineaPig, Horse)
<b>Target:</b> OCLN		
<b>Immunogen:</b> KLH conjugated synthetic peptide derived from mouse OCLN: 431-522/522. < Cytoplasmic >		
<b>Purification:</b> affinity purified by Protein A		<b>Predicted MW.:</b> 57 kDa
<b>Concentration:</b> 1mg/ml		<b>Subcellular Location:</b> Cell membrane
<b>Storage:</b> 0.01M TBS (pH7.4) with 1% BSA, 0.02% Proclin300 and 50% Glycerol. Shipped at 4°C. Store at -20°C for one year. Avoid repeated freeze/thaw cycles.		
<b>Background:</b> This gene encodes an integral membrane protein which is located at tight junctions. This protein may be involved in the formation and maintenance of the tight junction. The possibility of several alternatively spliced products has been suggested but the full nature of these products has not been described. [provided by RefSeq].		

**— VALIDATION IMAGES —**

Sample: Lane 1: A549 (Human) Cell Lysate at 30 ug  
Lane 2: MCF-7 (Human) Cell Lysate at 30 ug  
Lane 3: A431 (Human) Cell Lysate at 30 ug  
Lane 4: HepG2 (Human) Cell Lysate at 30 ug  
Lane 5: Hela (Human) Cell Lysate at 30 ug  
Primary: Anti-OCLN (bs-1495R) at 1/1000 dilution  
Secondary: IRDye800CW Goat Anti-Rabbit IgG at 1/20000 dilution  
Predicted band size: 57 kD  
Observed band size: 65/38/28 kD



Blank control: MCF7. Primary Antibody (green line): Rabbit Anti-OCLN antibody (bs-1495R)  
Dilution: 2µg / 10<sup>6</sup> cells; Isotype Control Antibody (orange line): Rabbit IgG . Secondary Antibody : Goat anti-rabbit IgG-FITC Dilution: 1µg /test. Protocol The cells were incubated in 5%BSA to block non-specific protein-protein interactions for 30 min at room temperature .Cells stained with Primary Antibody for 30 min at room temperature. The secondary antibody used for 40 min at room temperature. Acquisition of 20,000 events was performed.

**— SELECTED CITATIONS —**

- **[IF=15.923]** Changsheng Xing. et al. Microbiota regulate innate immune signaling and protective immunity against cancer. Cell Host Microbe. 2021 Apr;; IHC ;Mouse. 33894128
- **[IF=8.039]** Yifan Zhu. et al. Discovery of Selective P2Y6R Antagonists with High Affinity and In Vivo Efficacy for Inflammatory Disease Therapy. J MED CHEM. 2023;XXXX(XXX):XXX-XXX WB ;Mouse. 37078976
- **[IF=5.1]** Siyu Dai. et al. α-Glycerol monolaurate promotes tight junction proteins expression through PKC/MAPK/ATF-2 signaling pathway. FRONT NUTR. 2025 Jul;12: WB ;Pig. 40823018
- **[IF=4.122]** Hayes CL.et al. Commensal microbiota induces colonic barrier structure and functions that contribute to

Important Note: This product as supplied is intended for research use only, not for use in human, therapeutic or diagnostic applications.

homeostasis. (2018)Scientific Reports, 8(1). IF ;Mouse. 30242285

- **[IF=4.12]** Zou et al. Huangqin-tang ameliorates dextran sodium sulphate-induced colitis by regulating intestinal epithelial cell homeostasis, inflammation and immune response. (2016) Sci.Rep. 6:39299 IHC ;Mouse. 27982094